

**上海常浩高压管件有限公司**

SHANGHAI CHANGHAO HIGH PRESSURE PIPEFITTINGS CO.,LTD.

## 服务领域 SERVICE AREAS



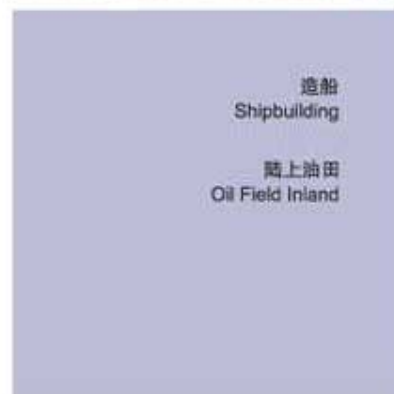
电厂  
Electric Power

石油天然气  
Gas Oil



海上油田  
Oil Field In Ocean

钢铁  
Steel



造船  
Shipbuilding

陆上油田  
Oil Field Inland



- ▶ 石油化工、石油天然气、海上油田、陆上油田、电力、纺织化纤、造船、食品、医药、造纸、化肥、建筑、城市煤气、环保、污水处理等
- ▶ Petrochemical Industry, Gas Oil, Oil Field In Ocean, Oil Field Inland, Electricity, Textile & Chemical Fiber, Food & Medicine, Paper And Fertilizer, Building, City Natural Gas, Environmental Protection, Waste Water Treatment.

# 企业简介

## BRIEF INTRODUCTION



上海常浩高压管件有限公司是专业生产与销售高压管件的厂家,产品有锻造法兰、弯头、三通、异径管(大小头)、绝缘接头、绝缘法兰、锻制承插件和高压螺纹管件等各类管道配件。可以按GB、HG、JB、SY、HGJ、SH、ASME、ANSI、API、MSS-SP、DIN、JIS等标准生产不同的管件和法兰。其产品除了在国内销售外,还远销东南亚、中东、欧洲、美洲,日本和韩国等国家和地区。产品优质,服务周到,在海内外赢得了很高的信誉,深受国内外广大客户的信赖,已成为国内较大的法兰和管件供应商之一。

公司建立了完善的产品质量管理体系,确保产品质量完全符合标准规范,满足客户要求。在产品的设计、材料采购、检验试验及生产的全过程中,严格执行管理体系文件规定。

本公司实力雄厚,公司拥有一批具有技术丰富的锻造实践和管道机械技术人才,配有完善的理化试验、机械性能、无损检测等一套先进的检测设备,为石油、化工、电力、冶金、造纸、制药等行业中的国内外大中型企业提供不同材质的工业管道配件和专业的配套服务。

上海常浩高压管件有限公司将以优质的产品、优惠的价格,完善的售后服务,竭诚满足用户要求,愿与海内外的朋友互惠互利、真诚合作、建立持久、相互信赖的合作关系,共创新世纪的辉煌。

Shanghai Chang-ho High Pressure Pipe Co., Ltd. is specialized in producing and marketing high-pressure pipe manufacturers, the products have forged flanges, elbows, three, different-diameter pipe (size head), insulation joints, insulating flange, and forging system for plug-ins Threaded pipe fittings and high pressure, such as various types of pipe fittings. Can be GB, HG, JB, SY, HGJ, SH, ASME, ANSI, API, MSS-SP, DIN, JIS standards for the production of different tube and flange. In addition to its products in domestic sales, but also Southeast Asia, the Middle East, Europe, the Americas, Japan and South Korea, and other countries and regions. Product quality, courteous service, at home and abroad won a high reputation, both at home and abroad by the trust our customers have become more domestic flange and pipe suppliers.

The company has established a perfect product quality management system to ensure the quality of products in full compliance with standard specifications to meet customer requirements. In the product design, material procurement, production test pilot and in the full and strict implementation of document management system requirements.

The strength of a solid company, the company has a number of technology is rich in forging machinery and pipe or technical personnel, with a sound physical and chemical testing, mechanical properties, such as a nondestructive testing of advanced testing equipment for the petroleum, chemical, power, metallurgy, paper, pharmaceutical, and other industries in the large and medium-sized enterprises at home and abroad to provide different materials of industrial pipe fittings and professional support services.

Shanghai Chang-ho High Pressure Pipe Co., will be quality products, pricing, and improve after-sales service and dedication to meet user requirements, and to friends at home and abroad and mutual benefit and sincere cooperation, the establishment of a lasting and mutually trust relationship between the total innovation century glory.

# Changhao High pressure Pipfittings

品质为本，诚信至上

## 企业资质

COMPANY CERTIFICATES



## 先进的生产设备 / *ADVANCED PRODUCTION EQUIPMENT*



弯头推制机



数控车床  
Numerical control lathe



异径管成型设备



生产车间



三通液压机

# 科学的检测设备 / SCIENTIFIC CHECK-OUT FACILITIES



布氏硬度检测  
Brinell hardness test



布氏硬度计  
Brinell hardness tester



尺寸检测 Size test



洛氏硬度检测  
Luo's hardness test



洛氏硬度计  
Luo's hardness tester



超声波探伤 Ultrasonic flaw detector



X射线探伤 X-ray flaw detection



金相显微镜  
Metallographic microscope



超声波测厚仪  
Ultrasonic flaw detector



直读光谱仪 PMI spectrometer

对焊管件 BUTT WELDING FITTINGS



锻制承插焊管件及管座 FORGED SOCKET WELDING FITTINGS AND OUTLETS



锻制螺纹管件 FORGED THREADED FITTINGS



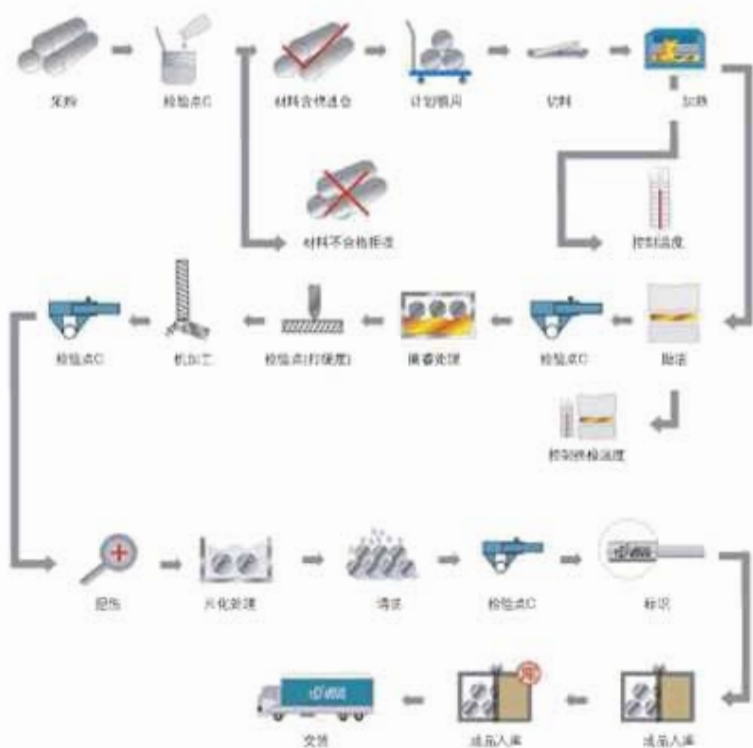
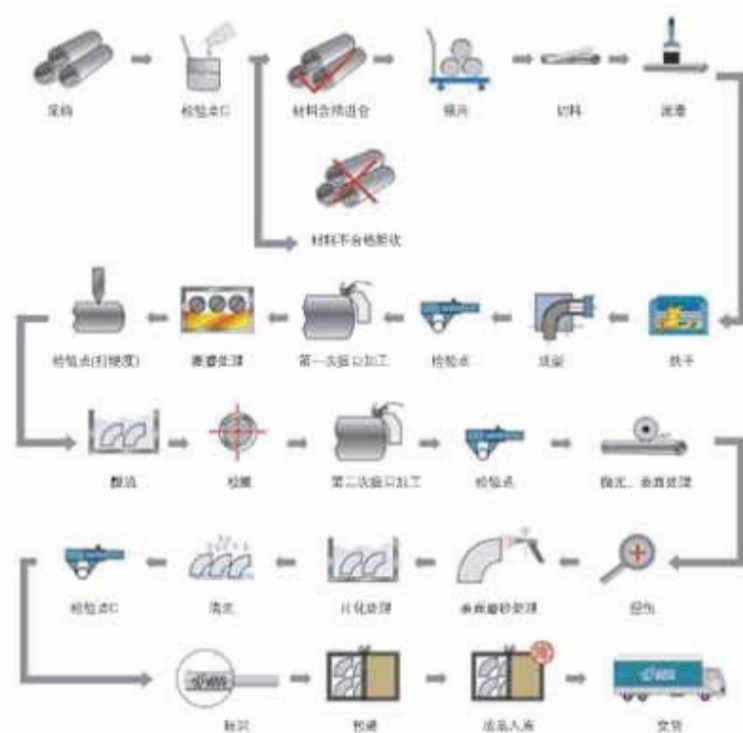
锻造法兰 FORGED FLANGES





# 对焊管件生产工艺流程及质量控制图

FLOW & QUALITY CONTROL DIAGRAM OF BUTT WELDING FITTINGS



**对焊管件** ..... 8-15

90°、45°、180° 弯头 90°、45°、180° Elbow	8
三通(等径、异径) Tee (Straight and Reducing)	9-10
异径管(同心、偏心) Reducer (Concentric and Eccentric)	11-12
管帽 Cap	13
翻边短节 Lap Joint Stub End	14
弯管 Bend	15

**锻制管件** ..... 16-17

管螺纹 Pipe Thread	16
螺纹弯头、三通、四通 Threaded Elbow, Tee and Cross	17
螺纹管帽、管帽 Threaded Coupling and Cap	18
螺纹管塞 Threaded Plug	19
六角双丝头 Hexagonal Nipple	20
活接头(螺纹、承插) Union (Threaded and Socket)	21
承插管件 Socket Welding Fittings	22
承插弯头、三通、四通 Socket Welding Elbow, Tee, Cross	23
承插管帽、管帽、斜三通 Socket Welding Cap, Coupling, Lateral	24
变径承插接头 Reducing Socket Inserts	25
支管台(管座) Outlet	26-30
异径短节 Swage Nipple	31
短节 Nipple	32

**锻造法兰** ..... 34-38

法兰结构图 Parameter of Flange Structure	33
法兰标准 Standard of Flange	34-35
法兰常用材料 Material for Flange	36

**绝缘接头** ..... 37-38

法兰式绝缘接头 Insulating Flange	37
整体式绝缘接头 Insulating Joint	38

**管件公差** ..... 39-40

对焊管件公差 Tolerance for Butt Welding Fittings	39
锻制管件公差 Tolerance for Forged Fittings	40

**钢管外径与壁厚表** ..... 45-50

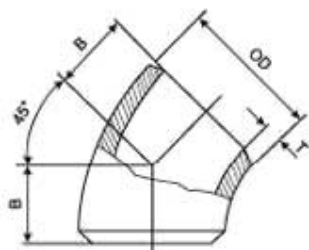
管外径与壁厚表 (GB/T12459、GB/T13401)	41
管外径与壁厚表 (SH3408、SH3409)	42
管外径与壁厚表 (ASME B36.10M、ASME B36.19M)	43
管外径与壁厚表 (JIS B2311、JIS B2312、JIS B2313)	44
管外径与壁厚表 (SY/T 0510 A类)	45
管外径与壁厚表 (SY/T 0510 B类)	46

**各国常用材料对照表** ..... 51-52

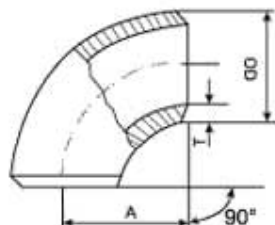
各国对焊管件、板、管材材料标准对照表	47
The standard contrast table for Butt Welding fitting, Steel plate and Pipe material	
各国锻制管件、法兰、棒材料标准对照表	48
The standard contrast table for Forged fitting, Flange and Bar material	



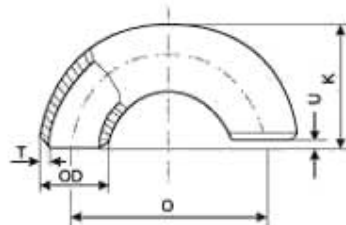
# 钢制对焊管件 BUTT WELDING FITTINGS



45°弯头  
45°Elbow



90°弯头  
90°Elbow



180°弯头  
180°Elbow

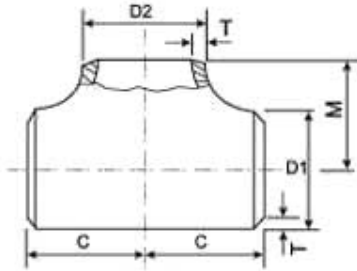
## 45°、90°、180°弯头 ELBOW

公称直径 Nominal Diameter		端部外径 Outside Diameter at Bevel		中心至端面 Center to End			中心至中心 Center to Center		背面至端面 Back to Faces	
				45°弯头 45°Elbow	90°弯头 90°Elbow		180°弯头 180°Elbow			
				B	A		O		K	
DN	NPS	A 系列 Series A	B 系列 Series B	长半径 Long Radius	长半径 Long Radius	短半径 Short Radius	长半径 Long Radius	短半径 Short Radius	长半径(A系列) Long Radius	短半径(A系列) Short Radius
15	1/2	21.3	18	16	38	—	76	—	48	—
20	3/4	26.9	25	19	38	—	76	—	51	—
25	1	33.7	32	22	38	25	76	51	56	41
32	1.1/4	42.4	38	25	48	32	95	64	70	52
40	1.1/2	48.3	45	29	57	38	114	76	83	62
50	2	60.3	57	35	76	51	152	102	106	81
65	2.1/2	73	76	44	95	64	190	127	132	100
80	3	88.9	89	51	114	76	229	152	159	121
90	3.1/2	101.6	—	57	133	89	267	178	184	140
100	4	114.3	108	64	152	102	305	203	210	159
125	5	139.7	133	79	190	127	381	254	262	197
150	6	168.3	159	95	229	152	457	305	313	237
200	8	219.1	219	127	305	203	610	406	414	313
250	10	273.0	273	159	381	254	762	508	518	391
300	12	323.9	325	190	457	305	914	610	619	467
350	14	355.6	377	222	533	356	1067	711	711	533
400	16	406.4	426	254	610	406	1219	813	813	610
450	18	457.2	478	286	686	457	1372	914	914	686
500	20	508.0	529	318	762	508	1524	1016	1016	762
550	22	559	—	343	838	559	1676	1118	1118	838
600	24	610	630	381	914	610	1829	1219	1219	914
650	26	660	—	406	991	660	1982	1320	—	—
700	28	711	720	438	1067	711	2134	1422	—	—
750	30	762	—	470	1143	762	2286	1524	—	—
800	32	813	820	502	1219	813	2438	1626	—	—
850	34	864	—	533	1295	864	2590	1728	—	—
900	36	914	920	565	1372	914	2744	1828	—	—
950	38	965	—	600	1448	965	2896	1930	—	—
1000	40	1016	1020	632	1524	1016	3048	2032	—	—
1050	42	1067	—	660	1600	1067	3200	2134	—	—
1100	44	1118	1120	695	1676	1118	3352	2236	—	—
1150	46	1168	—	727	1753	1168	3506	2336	—	—
1200	48	1220	1220	759	1829	1220	3658	2440	—	—

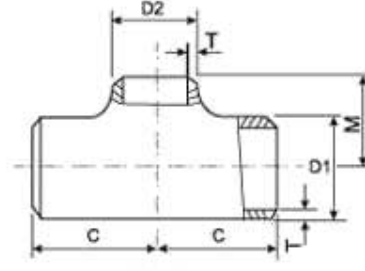
上述尺寸符合GB/T12459、GB/T13401、ASME B16.9、SH3408、SH3409、HG/T21635、HG/T21631、SY/T05010标准  
Above dimensions acc.to GB/T13401、ASME B16.9、SH3408、SH3409、HG/T21635、HG/T21631、SY/T05010



# 钢制对焊管件 BUTT WELDING FITTINGS



等径三通  
Straight Tee



异径三通  
Reducing Tee

## 三通(等径、异径) TEE (STRAIGHT AND REDUCING)

公称直径 Nominal Diameter		坡口处外径 Outside Diameter				中心 至端面 Center to End	
DN	NPS	D1		D2		C	M
		A 系列 Series A	B 系列 Series B	A 系列 Series A	B 系列 Series B		
15x15x15	1/2x1/2x1/2	21.3	18	21.3	18	25	25
15x15x10	1/2x1/2x3/8	21.3	18	17.3	14	25	25
15x15x8	1/2x1/2x1/4	21.3	18	13.7	10	25	25
20x20x20	3/4x3/4x3/4	26.9	25	26.9	25	29	29
20x20x15	3/4x3/4x1/2	26.9	25	21.3	18	29	29
20x20x10	3/4x3/4x3/8	26.9	25	17.3	14	29	29
25x25x25	1x1x1	33.7	32	33.7	32	38	38
25x25x20	1x1x3/4	33.7	32	26.9	25	38	38
25x25 x15	1x1x1/2	33.7	32	21.3	18	38	38
32x32x32	1.1/4x1.1/4x1.1/4	42.4	38	42.4	38	48	48
32x32x25	1.1/4x1.1/4x1	42.4	38	33.7	32	48	48
32x32x20	1.1/4x1.1/4x3/4	42.4	38	26.9	25	48	48
32x32x15	1.1/2x1.1/4x1/2	42.4	38	21.3	18	48	48
40x40x40	1.1/2x1.1/2x1.1/2	48.3	45	48.3	45	57	57
40x40x32	1.1/2x1.1/2x1.1/4	48.3	45	42.4	38	57	57
40x40x25	1.1/2x1.1/2x1	48.3	45	33.7	32	57	57
40x40x20	1.1/2x1.1/2x3/4	48.3	45	26.9	25	57	57
40x40x15	1.1/2x1.1/2x1/2	48.3	45	21.3	18	57	57
50x50x50	2x2x2	60.3	57	60.3	57	64	64
50x50x40	2x2x1.1/2	60.3	57	48.3	45	64	60
50x50x32	2x2x1.1/4	60.3	57	42.4	38	64	57
50x50x25	2x2x1	60.3	57	33.7	32	64	51
50x50x20	2x2x3/4	60.3	57	26.9	25	64	44
65x65x65	2.1/2x2.1/2x2.1/2	73.0	76	73.0	76	76	76
65x65x50	2.1/2x2.1/2x2	73.0	76	60.3	57	76	70
65x65x40	2.1/2x2.1/2x1.1/2	73.0	76	48.3	45	76	67
65x65x32	2.1/2x2.1/2x1.1/4	73.0	76	42.4	38	76	64
65x65x25	2.1/2x2.1/2x1	73.0	76	33.7	32	76	57
80x80x80	3x3x3	88.9	89	88.9	89	86	86
80x80x65	3x3x2.1/2	88.9	89	73.0	76	86	83
80x80x50	3x3x2	88.9	89	60.3	57	86	76
80x80x40	3x3x1.1/2	88.9	89	48.3	45	86	73
80x80x32	3x3x1.1/4	88.9	89	42.4	38	86	70
90x90x90	3.1/2x3.1/2x3.1/2	101.6	—	101.6	—	95	95
90x90x80	3.1/2x3.1/2x3	101.6	—	88.9	89	95	92

公称直径 Nominal Diameter		坡口处外径 Outside Diameter				中心 至端面 Center to End	
DN	NPS	D1		D2		C	M
		A 系列 Series A	B 系列 Series B	A 系列 Series A	B 系列 Series B		
90x90x65	3.1/2x3.1/2x2.1/2	101.6	—	73.0	76	95	89
80x90x50	3.1/2x3.1/2x2	101.6	—	60.3	57	95	83
90x90x40	3.1/2x3.1/2x1.1/2	101.6	—	48.3	45	95	79
100x100x100	4x4x4	114.3	108	114.3	108	105	105
100x100x90	4x4x3.1/2	114.3	108	101.6	—	105	102
100x100x80	4x4x3	114.3	108	88.9	89	105	98
100x100x65	4x4x2.1/2	114.3	108	73.0	76	105	95
100x100x50	4x4x2	114.3	108	60.3	57	105	89
100x100x40	4x4x1.1/2	114.3	108	48.3	45	105	86
125x125x125	5x5x5	141.3	133	141.3	133	124	124
125x125x100	5x5x4	141.3	133	114.3	108	124	117
125x125x90	5x5x3.1/2	141.3	—	101.6	—	124	114
125x125x80	5x5x3	141.3	133	88.9	89	124	111
125x125x65	5x5x2.1/2	141.3	133	73.0	76	124	108
125x125x50	5x5x2	141.3	133	60.3	57	124	105
150x150x150	6x6x6	168.3	159	168.3	159	143	143
150x150x125	6x6x5	168.3	159	141.3	133	143	137
150x150x100	6x6x4	168.3	159	114.3	108	143	130
150x150x90	6x6x3.1/2	168.3	—	101.6	—	143	127
150x150x80	6x6x3	168.3	159	88.9	89	143	124
150x150x65	6x6x2.1/2	168.3	159	73.0	76	143	121
200x200x200	8x8x8	219.1	219	219.1	219	178	178
200x200x150	8x8x6	219.1	219	168.3	159	178	168
200x200x125	8x8x5	219.1	219	141.4	133	178	162
200x200x100	8x8x4	219.1	219	114.3	108	178	156
200x200x90	8x8x3.1/2	219.1	—	101.6	—	178	152
250x250x250	10x10x10	273.0	273	273.0	273	216	216
250x250x200	10x10x8	273.0	273	219.1	219	216	203
250x250x150	10x10x6	273.0	273	168.3	159	216	194
250x250x125	10x10x5	273.0	273	141.3	133	216	191
250x250x100	10x10x4	273.0	273	114.3	108	216	184
300x300x300	12x12x12	323.9	325	323.9	325	254	254
300x300x250	12x12x10	323.9	325	273.0	273	254	241
300x300x200	12x12x8	323.9	325	219.1	219	254	229
300x300x150	12x12x6	323.9	325	168.3	159	254	219



# 钢制对焊管件 BUTT WELDING FITTINGS

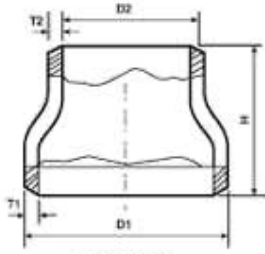
公称直径 Nominal Diameter		坡口处外径 Outside Diameter				中心 至端面 Center to End	
DN	NPS	D1		D2		C	M
		A 系列 Series A	B 系列 Series B	A 系列 Series A	B 系列 Series B		
300x300x125	12x12x5	323.9	325	141.3	133	254	216
350x350x350	14x14x14	355.6	377	355.6	377	279	279
350x350x300	14x14x12	355.6	377	323.9	325	279	270
350x350x250	14x14x10	355.6	377	273.0	273	279	257
350x350x200	14x14x8	355.6	377	219.1	219	279	248
350x350x150	14x14x6	355.6	377	168.3	159	279	238
400x400x400	16x16x16	406.4	426	406.4	426	305	305
400x400x350	16x16x14	406.4	426	355.6	377	305	305
400x400x300	16x16x12	406.4	426	323.9	325	305	295
400x400x250	16x16x10	406.4	426	273.0	273	305	283
400x400x200	16x16x8	406.4	426	219.1	219	305	273
400x400x150	16x16x6	406.4	426	168.3	159	305	264
450x450x450	18x18x18	457	480	457	480	343	343
450x450x400	18x18x16	457	480	406.4	426	343	330
450x450x350	18x18x14	457	480	355.6	377	343	330
450x450x300	18x18x12	457	480	323.9	325	343	321
450x450x250	18x18x10	457	480	273.0	273	343	308
450x450x200	18x18x8	457	480	219.1	219	343	298
500x500x500	20x20x20	508	530	508	530	381	381
500x500x450	20x20x18	508	530	457	480	381	368
500x500x400	20x20x16	508	530	406.4	426	381	356
500x500x350	20x20x14	508	530	355.6	377	381	356
500x500x300	20x20x12	508	530	323.9	325	381	346
500x500x250	20x20x10	508	530	273.0	273	381	333
500x500x200	20x20x8	508	530	219.1	219	381	324
550x550x550	22x22x22	559	—	559	—	419	419
550x550x500	22x22x20	559	—	508	—	419	406
550x550x450	22x22x18	559	—	457	—	419	394
550x550x400	22x22x16	559	—	406.4	—	419	381
550x550x350	22x22x14	559	—	355.6	—	419	381
550x550x300	22x22x12	559	—	323.9	—	419	371
550x550x250	22x22x10	559	—	273.0	—	419	359
600x600x600	24x24x24	610	630	610	630	432	432
600x600x550	24x24x22	610	—	559	—	432	432
600x600x500	24x24x20	610	630	508	530	432	432
600x600x450	24x24x18	610	630	457	480	432	419
600x600x400	24x24x16	610	630	406.4	426	432	406
600x600x350	24x24x14	610	630	355.6	377	432	406
600x600x300	24x24x12	610	630	323.9	325	432	397
600x600x250	24x24x10	610	630	273.0	273	432	384
650x650x650	26x26x26	660	—	660	—	495	495
650x650x600	26x26x24	660	—	610	—	495	483
650x650x550	26x26x22	660	—	559	—	495	470
650x650x500	26x26x20	660	—	508	—	495	457
650x650x450	26x26x18	660	—	457	—	495	444
650x650x400	26x26x16	660	—	406.4	—	495	432
650x650x350	26x26x14	660	—	355.6	—	495	432
650x650x300	26x26x12	660	—	323.9	—	495	422
700x700x700	28x28x28	711	720	711	720	521	521
700x700x650	28x28x26	711	—	660	—	521	521

公称直径 Nominal Diameter		坡口处外径 Outside Diameter				中心 至端面 Center to End	
DN	NPS	D1		D2		C	M
		A 系列 Series A	B 系列 Series B	A 系列 Series A	B 系列 Series B		
700x700x600	28x28x24	711	720	610	630	521	508
700x700x550	28x28x22	711	—	559	—	521	495
700x700x500	28x28x20	711	720	508	529	521	483
700x700x450	28x28x18	711	720	457	478	521	470
700x700x400	28x28x16	711	720	406.4	426	521	457
700x700x350	28x28x14	711	720	355.6	377	521	457
700x700x300	28x28x12	711	720	323.9	325	521	448
750x750x750	30x30x30	762	—	762	—	559	559
750x750x700	30x30x28	762	—	711	—	559	546
750x750x650	30x30x26	762	—	660	—	559	546
750x750x600	30x30x24	762	—	610	—	559	533
750x750x550	30x30x22	762	—	559	—	559	521
750x750x500	30x30x20	762	—	508	—	559	508
750x750x450	30x30x18	762	—	457	—	559	495
750x750x400	30x30x16	762	—	406.4	—	559	483
750x750x350	30x30x14	762	—	355.6	—	559	483
750x750x300	30x30x12	762	—	323.9	—	559	473
750x750x250	30x30x10	762	—	273.0	—	559	460
800x800x800	32x32x32	813	820	813	820	597	597
800x800x750	32x32x30	813	—	762	—	597	584
800x800x700	32x32x28	813	820	711	720	597	572
800x800x650	32x32x26	813	—	660	—	597	572
800x800x600	32x32x24	813	820	610	630	597	559
800x800x550	32x32x22	813	—	559	—	597	546
800x800x500	32x32x20	813	820	508	529	597	533
800x800x450	32x32x18	813	820	457	478	597	521
800x800x400	32x32x16	813	820	406.4	426	597	508
800x800x350	32x32x14	813	820	355.6	377	597	508
850x850x850	34x34x34	864	—	864	—	635	635
850x850x800	34x34x32	864	—	813	—	635	622
850x850x750	34x34x30	864	—	762	—	635	610
850x850x700	34x34x28	864	—	711	—	635	597
850x850x650	34x34x26	864	—	660	—	635	597
850x850x600	34x34x24	864	—	610	—	635	584
850x850x550	34x34x22	864	—	559	—	635	572
850x850x500	34x34x20	864	—	508	—	635	559
850x850x450	34x34x18	864	—	457	—	635	548
850x850x400	34x34x16	864	—	406.4	—	635	533
900x900x900	36x36x36	914	920	914	920	673	673
900x900x850	36x36x34	914	—	864	—	673	660
900x900x800	36x36x32	914	920	813	820	673	648
900x900x750	36x36x30	914	—	762	—	673	635
900x900x700	36x36x28	914	920	711	720	673	622
900x900x650	36x36x26	914	—	660	—	673	622
900x900x600	36x36x24	914	920	610	630	673	610
900x900x550	36x36x22	914	—	559	—	673	597
900x900x500	36x36x20	914	920	508	529	673	584
900x900x450	36x36x18	914	920	457	478	673	572
900x900x400	36x36x16	914	920	406.4	426	673	559

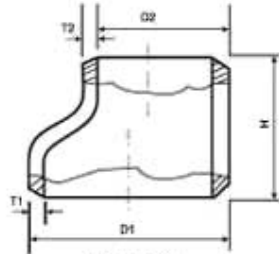
上述尺寸符合GB/T12459、GB/T13401、ASME B16.9、SH3408、SH3409、HG/T21635、HG/T21631、SY/T05010标准  
Above dimensions acc.to GB/T13401、ASME B16.9、SH3408、SH3409、HG/T21635、HG/T21631、SY/T05010



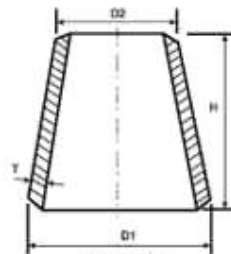
# 钢制对焊管件 BUTT WELDING FITTINGS



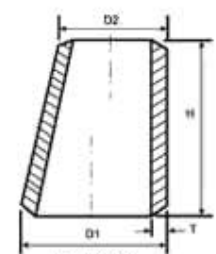
同心异径管  
Concentric Reducer



偏心异径管  
Eccentric Reducer



同心异径管  
Concentric Reducer



偏心异径管  
Eccentric Reducer

## 异径管(同心、偏心) REDUCER (CONCENTRIC AND ECCENTRIC)

公称通径 Nominal Diameter		坡口处外径 Outside Diameter		端面 至端面 End to End
DN	NPS	D1*D2		
		A 系列 Series A	B 系列 Series B	H
20x15	3/4x1/2	26.9x21.3	25x18	38
20x10	3/4x3/8	26.9x17.3	25x14	38
25x20	1x3/4	33.7x26.9	32x25	51
25x15	1x1/2	33.7x21.3	32x18	51
32x25	1.1/4x1	42.4x33.7	38x32	51
32x20	1.1/4x3/4	42.4x26.9	38x25	51
32x15	1.1/4x1/2	42.4x21.3	38x18	51
40x32	1.1/2x1.1/4	48.3x42.4	45x38	64
40x25	1.1/2x1	48.3x33.7	45x32	64
40x20	1.1/2x3/4	48.3x26.9	45x25	64
40x15	1.1/2x1/2	48.3x21.3	45x18	64
50x40	2x1.1/2	60.3x48.3	57x45	76
50x32	2x1.1/4	60.3x42.4	57x38	76
50x25	2x1	60.3x33.7	57x32	76
50x20	2x3/4	60.3x26.9	57x25	76
65x50	2.1/2x2	73.0x60.3	76x57	89
65x40	2.1/2x1.1/2	73.0x48.3	76x45	89
65x32	2.1/2x1.1/4	73.0x42.4	76x38	89
65x25	2.1/2x1	73.0x33.7	76x32	89
80x65	3x2.1/2	88.9x73.0	89x76	89
80x50	3x2	88.9x60.3	89x57	89
80x40	3x1.1/2	88.9x48.3	89x45	89
80x32	3x1.1/4	88.9x42.4	89x38	89
90x80	3.1/2x3	101.6x88.9	—	102
90x65	3.1/2x2.1/2	101.6x73.0	—	102
90x50	3.1/2x2	101.6x60.3	—	102
90x40	3.1/2x1.1/2	101.6x48.3	—	102
90x32	3.1/2x1.1/4	101.6x42.4	—	102

公称通径 Nominal Diameter		坡口处外径 Outside Diameter		端面 至端面 End to End
DN	NPS	D1*D2		
		A 系列 Series A	B 系列 Series B	H
100x90	4x3.1/2	114.3x101.6	—	102
100x80	4x3	114.3x88.9	108x89	102
100x65	4x2.1/2	114.3x73.0	108x76	102
100x50	4x2	114.3x60.3	108x57	102
100x40	4x1.1/2	114.3x48.3	108x45	102
125x100	5x4	141.3x114.3	133x108	127
125x90	5x3.1/2	141.3x101.6	—	127
125x80	5x3	141.3x88.9	133x89	127
125x65	5x2.1/2	141.3x73.0	133x76	127
125x50	5x2	141.3x60.3	133x57	127
150x125	6x5	168.3x141.3	159x133	140
150x100	6x4	168.3x114.3	159x108	140
150x90	6x3.1/2	168.3x101.6	—	140
150x80	6x3	168.3x88.9	159x89	140
150x65	6x2.1/2	168.3x73.0	159x76	140
200x150	8x6	219.1x168.3	219x159	152
200x125	8x5	219.1x141.3	219x133	152
200x100	8x4	219.1x114.3	219x108	152
200x90	8x3.1/2	219.1x101.6	—	152
250x200	10x8	273.0x219.1	273x219	178
250x150	10x6	273.0x168.3	273x159	178
250x125	10x5	273.0x141.3	273x133	178
250x100	10x4	273.0x114.3	273x108	178
300x250	12x10	323.9x273.1	325x273	203
300x200	12x8	323.9x219.1	325x219	203
300x150	12x6	323.9x168.3	325x159	203
300x125	12x5	323.9x141.3	325x133	203
350x300	14x12	355.6x323.9	377x325	330



# 钢制对焊管件 BUTT WELDING FITTINGS

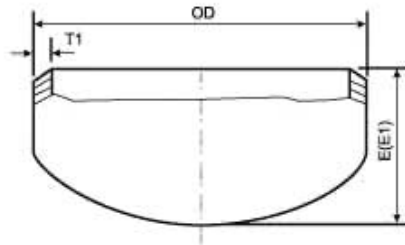
公称直径 Nominal Diameter		坡口处外径 Outside Diameter		端面 至端面 End to End
DN	NPS	D1*D2		
		A 系列 Series A	B 系列 Series B	H
350x250	14x10	355.6x273.0	377x273	330
350x200	14x8	355.6x219.1	377x219	330
350x150	14x6	355.6x168.3	377x159	330
400x350	16x14	406.4x355.6	426x377	356
400x300	16x12	406.4x323.9	426x325	356
400x250	16x10	406.4x273.0	426x273	356
400x200	16x8	406.4x219.1	426x219	356
450x400	18x16	457x406.4	478x426	381
450x350	18x14	457x355.6	478x377	381
450x300	18x12	457x323.9	478x325	381
450x250	18x10	457x273.0	478x273	381
500x450	20x18	508x457	529x478	508
500x400	20x16	508x406.4	529x426	508
500x350	20x14	508x355.6	529x377	508
500x300	20x12	508x323.9	529x325	508
550x500	22x20	559x508	—	508
550x450	22x18	559x457	—	508
550x400	22x16	559x406.4	—	508
550x350	22x14	559x355.6	—	508
600x550	24x22	610x559	—	508
600x500	24x20	610x508	630x529	508
600x450	24x18	610x457	630x478	508
600x400	24x16	610x406.4	630x426	508
650x600	26x24	660x610	—	610
650x550	26x22	660x559	—	610
650x500	26x20	660x508	—	610
650x450	26x18	660x457	—	610
700x650	28x26	711x680	—	610
700x600	28x24	711x610	720x630	610
700x550	28x22	711x559	—	610
700x500	28x20	711x508	720x530	610
750x700	30x28	762x711	—	610
750x650	30x26	762x660	—	610
750x600	30x24	762x610	—	610
750x550	30x22	762x559	—	610
800x750	32x30	813x762	—	610

公称直径 Nominal Diameter		坡口处外径 Outside Diameter		端面 至端面 End to End
DN	NPS	D1*D2		
		A 系列 Series A	B 系列 Series B	H
800x700	32x28	813x711	820x720	610
800x650	32x26	813x660	—	610
800x600	32x24	813x610	820x630	610
850x800	34x32	864x813	—	610
850x750	34x30	864x762	—	610
850x700	34x28	864x711	—	610
850x650	34x26	864x660	—	610
900x850	36x34	914x864	—	610
900x800	36x32	914x813	920x820	610
900x750	36x30	914x762	—	610
900x700	36x28	914x711	920x720	610
950x900	38x36	965x914	—	610
950x850	38x34	965x864	—	610
950x800	38x32	965x813	—	610
950x750	38x30	965x762	—	610
1000x950	40x38	1016x965	—	610
1000x900	40x36	1016x914	1020x920	610
1000x850	40x34	1016x864	—	610
1000x800	40x32	1016x813	1020x820	610
1050x1000	42x40	1067x1016	—	610
1050x950	42x38	1067x965	—	610
1050x900	42x36	1067x914	—	610
1050x850	42x34	1067x864	—	610
1100x1050	44x42	1118x1067	—	610
1100x1000	44x40	1118x1016	1120x1020	610
1100x950	44x38	1118x965	—	610
1100x900	44x36	1118x914	1120x920	610
1150x1100	46x44	1168x1118	—	711
1150x1050	46x42	1168x1067	—	711
1150x1000	46x40	1168x1016	—	711
1150x950	46x38	1168x965	—	711
1200x1150	48x46	1220x1168	—	711
1200x1100	48x44	1220x1118	1220x1120	711
1200x1050	48x42	1220x1067	—	711
1200x1000	48x40	1220x1016	1220x1020	711

上述尺寸符合GB/T12459、GB/T13401、ASME B16.9、SH3408、SH3409、HG/T21635、HG/T21631、SY/T05010标准  
Above dimensions acc.to GB/T13401、ASME B16.9、SH3408、SH3409、HG/T21635、HG/T21631、SY/T05010



# 钢制对焊管件 BUTT WELDING FITTINGS



## 管帽 CAP

公称直径 Nominal Diameter		端部外径 Outside Diameter at Bevel		背面至端面的距离 Back to End		
DN	NPS	A 系列 Series A	B 系列 Series B	E	长度E时极限厚度T	E1
15	1/2	21.3	18	25	4.57	25
20	3/4	26.9	25	25	3.81	25
25	1	33.7	32	38	4.57	38
32	1.1/4	42.4	38	38	4.83	38
40	1.1/2	48.3	45	38	5.08	38
50	2	60.3	57	38	5.59	44
65	2.1/2	73.0	76	38	7.11	51
80	3	88.9	89	51	7.62	64
90	3.1/2	101.6	—	64	8.13	76
100	4	114.3	108	64	8.64	76
125	5	139.7	133	76	9.65	89
150	6	168.3	159	89	10.92	102
200	8	219.1	219	102	12.70	127
250	10	273.0	273	127	12.70	152
300	12	323.9	325	152	12.70	178
350	14	355.6	377	165	12.70	191
400	16	406.4	426	178	12.70	203
450	18	457.2	478	203	12.70	229
500	20	508.0	529	229	12.70	254
550	22	559	—	254	12.70	254
600	24	610	630	267	12.70	305
650	26	660	—	267	—	—
700	28	711	720	267	—	—
750	30	762	—	267	—	—
800	32	813	820	267	—	—
850	34	864	—	267	—	—
900	36	914	920	267	—	—
950	38	965	—	305	—	—
1000	40	1016	1020	305	—	—
1050	42	1067	—	305	—	—
1100	44	1118	1120	343	—	—
1150	46	1168	—	343	—	—
1200	48	1220	1220	343	—	—

注：高度E适用于T不超过括号内数值时，否则应采用E1高度。

When T is less the dimension in parentheses, the height E is available. Otherwise E1 is available.

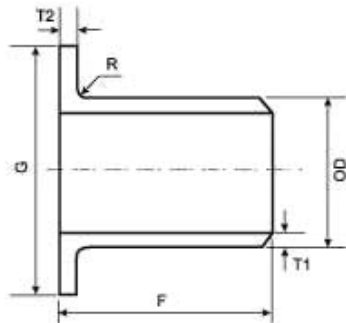
上述尺寸符合GB/T12459、GB/T13401、ASME B16.9、SH3408、SH3409、HG/T21635、HG/T21631、SY/T05010标准

Above dimensions acc.to GB/T13401、ASME B16.9、SH3408、SH3409、HG/T21635、HG/T21631、SY/T05010

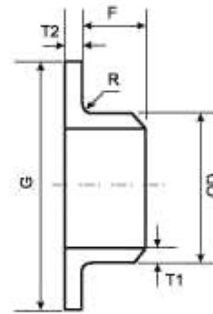




# 钢制对焊管件 BUTT WELDING FITTINGS



长型  
Long Pattern



短型  
Short Pattern

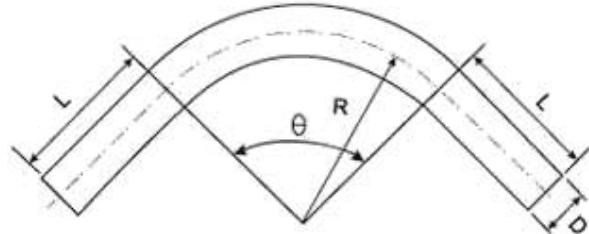
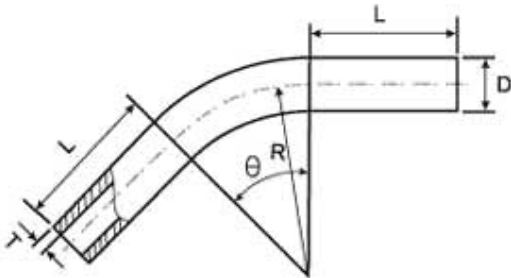
## 翻边短节 LAP JOINT STUB END

公称直径 Nominal Diameter		短节外径 Outside Diameter OD	接管长度F Length		搭接外径 Diameter Of Lap Nominal&Maximum G	圆角半径 R	
DN	NPS		长型 LP	短型 SP		A Max	B Max
15	1/2	21.3	76	51	35	3	0.75
20	3/4	26.7	76	51	43	3	0.75
25	1	33.4	102	51	51	3	0.75
32	1.1/4	42.4	102	51	64	5	0.75
40	1.1/2	48.3	102	51	73	6	0.75
50	2	60.3	152	64	92	8	0.75
65	2.1/2	73.0	152	64	105	8	0.75
80	3	88.9	152	64	127	10	0.75
90	3.1/2	101.6	152	76	140	10	0.75
100	4	114.3	152	76	157	11	0.75
125	5	141.3	203	76	186	11	1.5
150	6	168.3	203	89	216	13	1.5
200	8	219.1	203	102	270	13	1.5
250	10	273.1	254	127	324	13	1.5
300	12	323.9	254	152	381	13	1.5
350	14	355.6	305	152	413	13	1.5
400	16	406.4	305	152	470	13	1.5
450	18	457.2	305	152	533	13	1.5
500	20	508	305	152	584	13	1.5
550	22	559	305	152	641	13	1.5
600	24	610	305	152	692	13	1.5

注：上述尺寸符合MSS SP-43、ASME B16.9标准。  
Above dimensions acc. to MSS SP-43、ASME B16.9.



钢制对焊管件  
BUTT WELDING FITTINGS



弯管 BEND

项 目 Item	内 容 Description
标准 Standard	按DL/T515《电站弯管》、SY5257《钢制弯管》执行，或按客户提出的标准或技术要求执行。 According to DL/T515 《power station Bend》，SY 5257 《steel Bend》，or customer's technical drawings
材料 Material	碳钢、合金钢、不锈钢。 Carbon steel, alloy steel, stainless steel
弯曲半径R Bend Radius R	$R \leq 6000\text{mm}$ ，且 $R \geq 3D$ (用R等于3D、4D、5D、6D、7D、8D、9D、10D来表示弯曲半径，D为管子外径) $R \geq 3D$ (R=3D、4D、5D、6D、7D、8D、9D、10D) D: outside diameter
弯曲角度θ Bend Angle θ	常用为15°、30°、45°、60°、90°、135°和180°，也可按客户提出的角度弯制。 Normally 15°、30°、45°、60°、90°、135°、180° or at customer's option
直段长度L Length of Straight L	弯管两端直段长度一般在300mm-1500mm左右，也可按客户要求定制长度。 Normally between 300mm and 1500mm in length of straight, it is at customer's option
外径D Outside Diameter D	$D \leq 1220\text{mm}$
壁厚T Wall Thickness T	$T \leq 120\text{mm}$
端部破口 End Bevel	按对焊管件焊制破口结构型式执行 According to welding bevel of butt welding fitting
重量 Weight	重量(Kg)= $\frac{0.0433(D-T)TR\theta}{100000}$ +L(双端直管段重量) Weight/kg L(Weight of Double Sides Straight Length)



## 管螺纹(PIPE THREAD)

螺纹管件为采用锥管螺纹连接型式的管件，仅用于英制管，不能用于公制管。龙耐公司生产的螺纹管件符合美国ANSI B16.11和GB/T14626标准，在工程管道中常用的管螺纹有三种：

Threaded fittings are taper threaded connecting pipe fittings which are suitable for BSP (British Standard Pipe) pipe fittings, instead of metric pipe fittings. These threaded fittings are provided by Longhai company and conform to the American ANSI B16.11 Standard and the GB/T14626 Standard, in which three kinds of common pipe threads are used in pipeline engineering.

① ISO7/1是国际通用螺纹密封管螺纹，牙型角55°，锥度1:16。  
内螺纹有平行(Rp)和锥形(Rc)两种，外螺纹只有锥形R，常用为Rp-R，如图a所示，用于公用工程较多，而Rc-R使用较不普遍。

Tooth profile angle is 55°, taper is 1:16. Internal thread type: Rp, Rc, outer thread: R Rp-R is used widely in construction Engineering, But Rc-R is not used widely, Shown as drawing a.

② ISO228是国际通用的非螺纹密封管螺纹，牙型角55°。  
内、外螺纹均为平行，如图b所示。

ISO228 is nonthread sealed pipe thread. Internal and outer thread is parallel. The tooth profile angle is 55° shown and drawing b.

③ ANSI B1.20.1是美国螺纹密封管螺纹，牙型角60°(NPT)，锥度1:16。

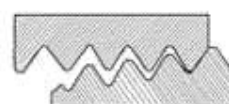
内、外螺纹均为锥形，是高温高压管道中常用的管螺纹，AMSE B16.11，如图c所示。螺纹管件采用NPT螺纹。NPT与ISO7/1(俗称BSP)，虽然牙型角不同，但1/2和3/4两档的螺距相同，可以相互连接。

ANSI B1.20.1 is thread sealed pipe thread, The tooth profile angle is 60° (NPT), Taper is 1:16 internal and outer thread is taper it is used widely in high pressure and temperature fittings. Shown an drawing c. The profile angle is different for NPT and ISO7/1. But the thread interval is same for thread 1/2 & 3/4. They can assembly.



## 锥管螺纹基本尺寸 DIMENSION OF TAPER PIPE THREAD

螺纹尺寸 Dimension of Thread	ISO7/1				牙角型 Tooth Profile Angle	NPT				牙角型 Tooth Profile Angle
	每英寸 牙数 Number of Turns per inch	螺距 Thread Interval (mm)	基准长度 Basic Length (mm)	装配余量 Assembly Margin (mm)		每英寸 牙数 Number of Turns per inch	螺距 Thread Interval (mm)	手旋合长度 Length of With Done by Hand (mm)	扳动拧紧 长度 With Tool (mm)	
1/8	28	0.907	4	2.5	55°	27	0.9408	4.1	2.8	60°
1/4	19	1.337	6	3.7		18	1.4112	5.6	4.2	
3/8	19	1.337	6.4	3.7		18	1.4112	6.1	4.2	
1/2	14	1.814	8.2	5		14	1.814	8.1	5.4	
3/4	14	1.814	9.5	5		14	1.814	8.6	5.4	
1	11	2.309	10.4	6.4		11.1/2	2.2088	10.2	6.6	
1.1/4	11	2.309	12.7	6.4		11.1/2	2.2088	10.7	6.6	
1.1/2	11	2.309	12.7	6.4		11.1/2	2.2088	10.7	6.6	
2	11	2.309	15.9	7.5		11.1/2	2.2088	11.1	6.6	
2.1/2	11	2.309	17.5	9.2		8	3.175	17.3	6.4	
3	11	2.309	20.6	9.2		8	3.175	19.5	6.4	
4	11	2.309	25.4	10.4		8	3.175	21.4	6.4	
6	11	2.309	28.6	11.5		8	3.175	24.3	6.4	



(a) Rp/R ISO F/1



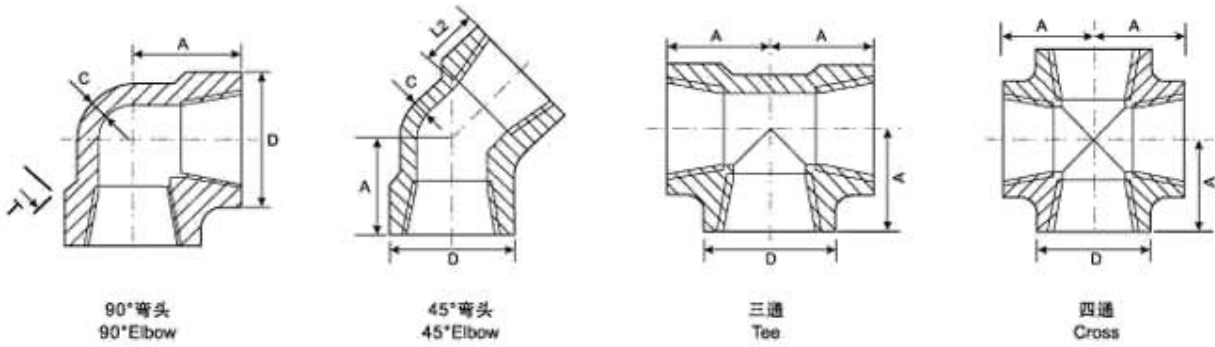
(b) G ISO 228



(c) NPT



锻制管件  
FORGED FITTINGS



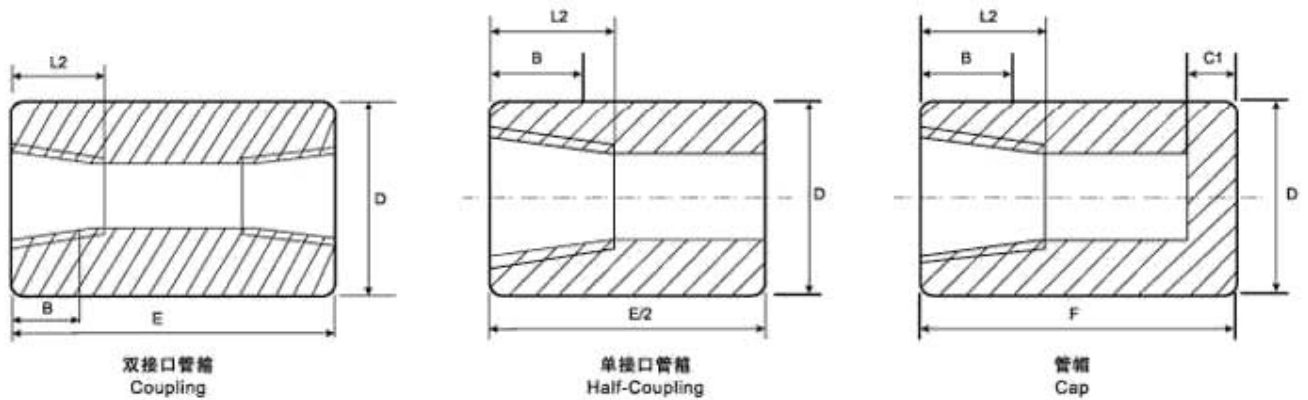
螺纹弯头、三通、四通 THREADED ELBOW TEE、CROSS

公称直径 Nominal Diameter		中心至端面 Center to End						外径 Outside Diameter			壁厚 Wall Thickness			螺纹长度 Length of Thread	
		A						D			Cmin				
		弯头、三通、四通 Elbow, Tee, Cross			45°弯头 45°Elbow										
DN	NPS	2000LB Sch80	3000LB Sch160	6000LB XXS	2000LB Sch80	3000LB Sch160	6000LB XXS	2000LB Sch80	3000LB Sch160	6000LB XXS	2000LB Sch80	3000LB Sch160	6000LB XXS	NPT	RC
6	1/8	21	21	25	17	17	19	22	22	25	3.0	3.0	6.5	6.5	6.5
8	1/4	21	25	29	17	19	22	22	25	33	3.0	3.5	6.5	8.0	10.0
10	3/8	25	29	33	19	22	25	25	33	38	3.0	3.5	7.0	9.0	10.5
15	1/2	29	33	38	22	25	29	33	38	46	3.0	4.0	8.0	11.0	13.5
20	3/4	33	38	44	25	29	33	38	46	56	3.0	4.5	8.5	12.5	14.0
25	1	38	44	51	29	33	35	46	56	62	3.5	5.0	10.0	14.5	17.5
32	1.1/4	44	51	60	33	35	43	56	62	75	4.0	5.5	10.5	17.0	18.0
40	1.1/2	51	60	64	35	43	44	62	75	84	4.0	5.5	11.0	18.0	18.5
50	2	60	64	83	43	45	52	75	84	102	4.5	7.0	12.0	19.0	19.0
65	2.1/2	76	83	95	52	52	64	92	102	121	5.5	7.5	15.5	23.5	29.0
80	3	86	96	106	64	64	79	110	121	146	6.0	9.0	16.5	26.0	30.5
100	4	106	114	114	79	79	79	146	152	152	6.5	11.0	18.5	27.5	33.0

上述尺寸符合GB/T14626、ANSI B16.11、BS3799标准。  
Above dimensions acc.to the standard of GB/T14626、ANSI B16.11、BS3799.



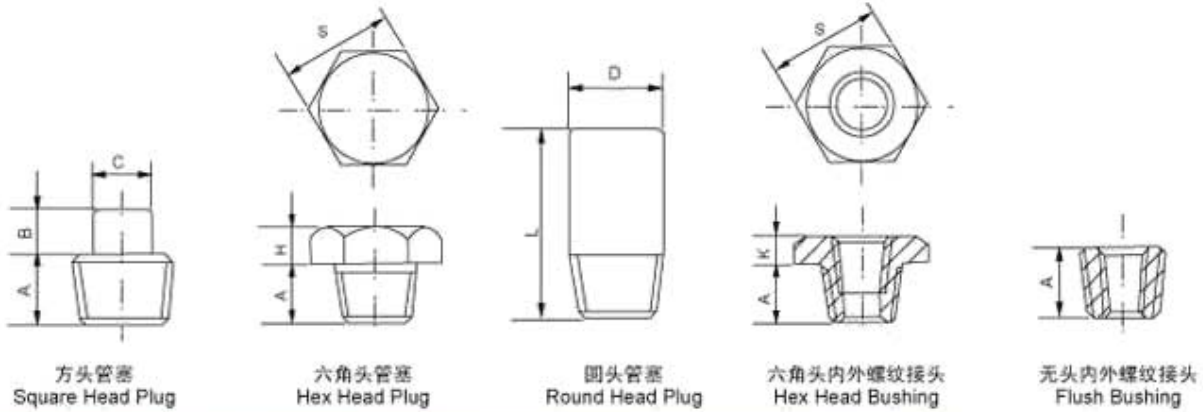
锻制管件  
FORGED FITTINGS



螺纹管箍、管帽 THREADED COUPLING AND CAP

公称直径 Nominal Diameter		管箍、管帽长度 End to End				外径 Outside Diameter		管帽顶厚 End Wall Thickness		螺纹长度 Length of Thread	
DN	NPS	E		F		D		Cmin		B	L2
		3000LB Sch160	6000LB XXS	3000LB Sch160	6000LB XXS	3000LB Sch160	6000LB XXS	3000LB Sch160	6000LB XXS		
6	1/8	32	32	19	—	16	22	6.0	—	6.5	6.5
8	1/4	35	35	25	27	19	25	6.0	6.5	8.0	10.0
10	3/8	38	38	25	27	22	32	5.0	6.5	9.0	10.5
15	1/2	48	48	32	33	29	38	6.5	8.0	11.0	13.5
20	3/4	51	51	37	38	35	44	6.5	8.0	12.5	14.0
25	1	60	60	41	43	44	57	9.5	11.0	14.5	17.5
32	1.1/4	67	67	44	46	57	64	9.5	11.0	17.0	18.0
40	1.1/2	79	79	44	48	64	76	11.0	12.5	18.0	18.5
50	2	86	86	48	51	76	92	12.5	16.0	19.0	19.0
65	2.1/2	92	92	60	64	92	108	16.0	19.0	23.5	29.0
80	3	108	108	65	68	108	127	19.0	22.0	26.0	30.5
100	4	121	121	68	75	140	159	22.0	28.5	27.5	33.0

上述尺寸符合GB/T14626、ANSI B16.11、BS3799标准。  
Above dimensions acc.to the standard of GB/T14626、ANSI B16.11、BS3799.



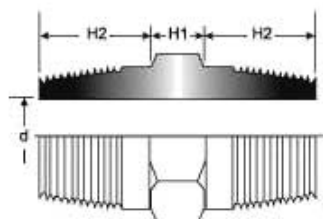
螺纹管塞、内外螺纹接头 THREADED PLUG AND BUSHING

适用标准: GB/T 14626

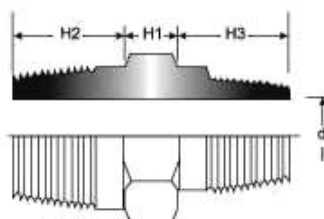
公称直径 Nominal Diameter	螺纹尺寸代号 Thread Size Code	螺纹长度 Length of Thread	方头管塞 Square Head Plug		圆头管塞 Round Head Plug		六角头管塞及内外螺纹接头 Hex Head Plug and Flush Bushing		
			方头高度 Heigh of Square	对边宽度 Width of Flats	圆头直径 Diameter of Round Head	长度 Length	对边宽度 Width of Flats	六角头高度 Hex Heigh	
			A(min)	B(min)	C(min)	D	L(min)	S	K(min)
8	1/4	11.0	6	9.5	13	41	16.0	3	6
10	3/8	12.5	8	11.0	17	41	17.5	4	8
15	1/2	14.5	10	14.5	21	44	22.0	5	8
20	3/4	16.0	11	16.0	27	44	27.0	6	10
25	1	19.0	13	20.5	33	51	35.0	6	10
32	1.1/4	20.5	14	24.0	43	51	44.5	7	14
40	1.1/2	20.5	16	28.5	48	51	51.0	8	16
50	2	22.0	17	33.5	60	64	63.5	9	17
65	2.1/2	27.0	19	38.0	73	70	76.0	10	19
80	3	28.5	21	43.0	89	70	89.0	10	21
100	4	32.0	25	63.5	114	76	117.5	13	25

适用标准: ASME B16.11

公称直径 Nominal Diameter	螺纹长度 Length of Thread	方头管塞 Square Head Plug		圆头管塞 Round Head Plug		六角头管塞及内外螺纹接头 Hex Head Plug and Flush Bushing		
		方头高度 Heigh of Square	对边宽度 Width of Flats	圆头直径 Diameter of Round Head	长度 Length	对边宽度 Width of Flats	六角头高度 Hex Heigh	
NPS	A	B	C	D	L(min)	S	K	H
1.8	9.5	6	7.0	10	35	11.0	—	6
1/4	11.0	6	9.5	13	41	16.0	3	6
3/8	12.5	8	11.0	17	41	17.5	4	6
1/2	14.5	10	14.5	21	44	22.0	5	8
3/4	16.0	11	16.0	27	44	27.0	6	10
1	19.0	13	20.5	33	51	35.0	6	10
1.1/4	20.5	14	24.0	43	51	44.5	7	14
1.1/2	20.5	16	28.5	48	51	51.0	8	16
2	22.0	17	33.5	60	64	63.5	9	17
2.1/2	27.0	19	38.0	73	70	76.0	10	19
3	28.5	21	43.0	89	70	89.0	10	21
4	32.0	25	63.5	114	76	117.5	13	25



同径六角双丝头  
Straight Hexagonal Nipple



异径六角双丝头  
Reducing Hexagonal Nipple

## 六角双丝头 HEXAGONAL NIPPLE

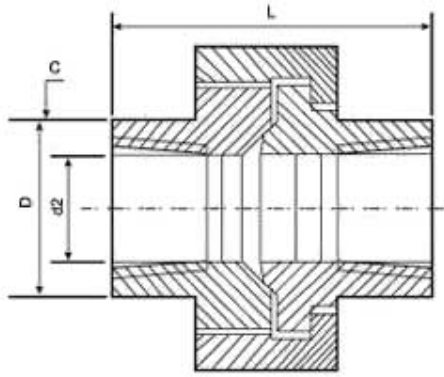
公称直径 Nominal Diameter		尺寸 Size			
DN	NPS	d	H1	H2	H3
6	1/8	4.1	6	10	—
8	1/4	7.1	8	14	—
10	3/8	8.9	8	14	—
10 x 8	3/8 x 1/4	7.1	8	14	14
15	1/2	11.9	9	19	—
15 x 10	1/2 x 3/8	8.9	9	19	14
15 x 8	1/2 x 1/4	7.1	9	19	14
20	3/4	16.0	10	19	—
20 x 15	3/4 x 1/2	11.9	10	19	19
20 x 10	3/4 x 3/8	8.9	10	19	14
20 x 8	3/4 x 1/4	7.1	10	19	14
25	1	20.1	11	24	—
25 x 20	1 x 3/4	16.0	11	24	19
25 x 15	1 x 1/2	11.9	11	24	19
25 x 10	1 x 3/8	8.9	11	24	14
32	1.1/4	27.9	12	24	—
32 x 25	1.1/4 x 1	20.1	12	24	24
32 x 20	1.1/4 x 3/4	16.0	12	24	19

公称直径 Nominal Diameter		尺寸 Size			
DN	NPS	d	H1	H2	H3
32 x 15	1.1/4 x 1/2	11.9	12	24	19
40	1.1/2	32.0	14	25	—
40 x 32	1.1/2 x 1.1/4	27.9	14	25	24
40 x 25	1.1/2 x 1	20.1	14	25	24
40 x 20	1.1/2 x 3/4	16.0	14	25	19
50	2	39.9	16	26	—
50 x 40	2 x 1.1/2	32.0	16	26	25
50 x 32	2 x 1.1/4	27.9	16	26	24
50 x 25	2 x 1	20.1	16	26	24
65	2.1/2	55.1	18	38	—
65 x 50	2.1/2 x 2	39.9	18	38	26
65 x 40	2.1/2 x 1.1/2	32.0	18	38	25
65 x 32	2.1/2 x 1.1/4	27.9	18	38	24
80	3	65.0	20	40	—
80 x 65	3 x 2.1/2	55.1	20	40	38
80 x 50	3 x 2	39.9	20	40	26
80 x 40	3 x 1.1/2	32.0	20	40	25

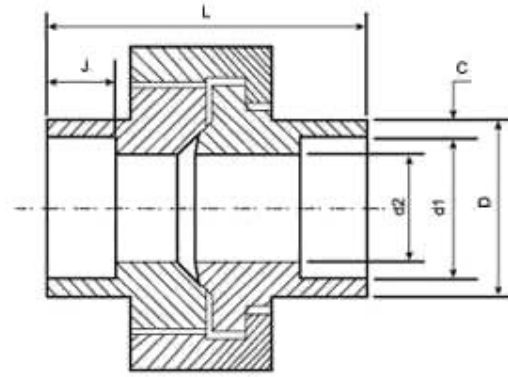
**说明:**

螺纹型式为GB/T 12716(ANSI/ASME B1.20.1)中的60°圆锥管螺纹NPT; 也可采用其它型式的螺纹制造, 请在订货时注明。

The standards and codes of the fittings is conical threaded NPT angle 60°of GB/T 12716(ANSI/ASME B1.20.1), and if requiring other types of thread, please indicate them in the purchased order.



螺纹活接头  
Threaded Union



承插活接头  
Socket Union

活接头 (螺纹、承插) UNION (Threaded and Socket)

公称直径 Nominal Diameter		外径 Outside Diameter		壁厚 Wall Thickness		承插孔径 Socket Bore	流通孔径 Water way Bore	承插孔深度 Depth of Socket	公称装配长度 Length Assem Nominal
		Dmin		Cmin		d1	d2	J	L
DN	NPS	承插焊 Socket	螺纹 Threaded	承插焊 Socket	螺纹 Threaded	承插焊 Socket	承插焊、螺纹 Socket & Threaded	承插焊 Socket	承插焊、螺纹 Socket & Threaded
6	1/8	21.8	14.7	3.2	2.5	10.65	6.43	10	41.4
8	1/4	21.8	19.0	3.3	3.1	14.10	9.45	10	41.4
10	3/8	25.9	22.9	3.5	3.2	17.55	13.51	10	46.0
15	1/2	31.2	27.7	4.1	3.8	21.70	17.07	10	49.0
20	3/4	37.1	33.5	4.3	4.0	27.05	21.39	13	56.9
25	1	45.5	41.4	5.0	4.6	33.80	27.74	13	62.0
32	1.1/4	54.9	50.5	5.3	4.9	42.55	35.36	13	71.1
40	1.1/2	61.5	57.2	5.6	5.1	48.65	41.20	13	76.5
50	2	75.2	70.1	6.1	5.6	61.10	52.12	16	86.1
65	2.1/2	91.7	85.3	7.7	7.1	73.80	64.31	16	102.4
80	3	109.2	102.4	8.4	7.7	89.80	77.27	16	109.0

上述尺寸符合MSS SP-83、BS3799标准。Above dimensions acc.to MSS SP-83、BS3799.





## 承插管件(SOCKET WELDING FITTINGS)

承插焊管件源于美国ANSI B16.11, 仅用于英制管, 但由于其施工简单方便, 产品安全可靠, 标准化程度高, 为此国内使用日益广泛, 并逐渐扩展到公制管领域, 本公司生产英制及公制两个系列的承插焊管件。除承插口尺寸按本页下表有所区别外, 其余均相同。

Socket welding fittings are derived from American ANSI B16.11, only suitable for BSP pipe fittings. However, due to their simple installation, simple and safe operation, reliable performances and high quality, they enjoy a great popularity among customers at home and abroad and have gradually expanded to the field of metric pipe fittings. Longnai specializes in producing and processing two series of socket welding fittings, namely BSP and metric socket welding fittings. Except for socket size difference (see the following table), these fittings are of the same kind.

本公司生产的承插焊管件符合下列标准:

Our company manufacture socket welding fitting as following standard:

英制管系列 British series	公制管系列 Metric series
ANSI B16.11 BS3799 JIS B2316 GB/T14383(A系列) 中石化 SH3410 化工部 HG21634	GB/T14383(B系列) 化工部 HG21634(公制系列)

国内公制管一般不采用壁厚等级, 而注明具体壁厚, 为此, 用户在订购公制承插管件, 应注明具体外径及壁厚尺寸。

It doesn't say schedule but thickness for metric pipe. So you shall tell the OD and thickness when order.

例如(For example):

SH3410 弯头(elbow) 1" Sch80(或3000LB) 20# (用于英制管 British series)

HG21634 弯头(elbow)  $\phi$ 45x4 20# (用于公制管 Metric series)

本公司生产的承插焊管件材料有碳钢、合金钢、不锈钢, 供用户选用。

We manufacture the socket welding fittings in carbon steel, Alloy steel and stainless steel for user customer.

承插焊管件压力等级与管子壁厚管表号 Pressure Rate and Schedule		
压力等级 Rate	管子壁厚管表号 Schedule	
3000LB	Sch80	XS
6000LB	Sch160	—
9000LB	—	XXS

小口径管壁厚 Thickness of small diameter pipe mm				
DN	NPS	管子壁厚管表号 Schedule		
mm	in	Sch80	Sch160	XXS
6	1/8	2.41	3.15	4.83
8	1/4	3.02	3.60	6.05
10	3/8	3.20	4.01	6.40

## 承插口尺寸表 SOCKET WELDING END DIMENSION

公称通径 Nominal Diameter		Jmin	ANSI B16.11 SH3410 GB/T 14383 (A系列) JIS B2316									GB/T14383 (B系列) HG21634 (公制)			
			钢管外径 Outside Diameter of Pipe	插口直径 Bmin Diameter of Fancet	插口孔柱 Dmin 14383			插口壁厚 C min			钢管外径 Outside diameter of pipe	插口直径 Bmin Diameter of Fancet	插口孔柱 D		
					3000LB	6000LB	9000LB	3000LB	6000LB	9000LB			3000LB	6000LB	
DN	NPS		Sch80	Sch160	XXS	Sch80	Sch160	XXS	Sch80	Sch160	XXS	Sch80	Sch160		
6	1/8	10	10.3	10.7	6.1	3.2	—	3.2	3.5	—	10	10.4	5	4	
8	1/4	10	13.9	14.1	8.5	5.6	—	3.3	4.0	—	12	12.4	6	5	
10	3/8	10	17.1	17.5	11.8	8.4	—	3.5	4.4	—	14	14.4	8	6	
15	1/2	10	21.3	21.8	15	11.0	5.6	4.1	5.2	8.2	18	18.5	11	19	
20	3/4	13	26.9	27.4	20.2	14.8	10.3	4.3	6.1	8.6	25	25.5	17	14	
25	1	13	33.7	34.2	25.9	19.9	14.5	5.0	7.0	10.0	32	32.5	23	20	
(32)	1.1/4	13	42.4	42.9	34.3	28.7	22	5.3	7.0	10.6	38	38.5	28	26	
40	1.1/2	13	48.3	48.3	40.1	33.2	27.2	5.6	7.8	11.2	45	45.5	35	31	
50	2	16	60.3	61.1	51.7	42.1	37.4	6.1	9.5	12.2	57	57.8	46	40	
(65)	2.1/2	16	71.6(73)	71.6(73.8)	61.2	56.1	—	7.7	12.5	—	76	76.8	62	56	
80	3	16	88.9	89.8	76.4	66.9	—	8.3	13.8	—	89	89.9	73	67	
100	4	19	114.3	115.5	100.7	—	—	9.4	—	—	108	109.2	91	—	

说明:

1、承插焊管件一般用于英制管, 但当用户注明时, 本公司亦可生产用于公制管的承插焊管件, 其承口尺寸按上表右列尺寸。

2、公制承插口壁厚尺寸Cmin值按英制管插口相应数值。

3、公制承插口尺寸D, 可根据具体壁厚调整, 为此用户订购公制承插管件时, 可注明管子壁厚尺寸, 代替压力等级。

Note:

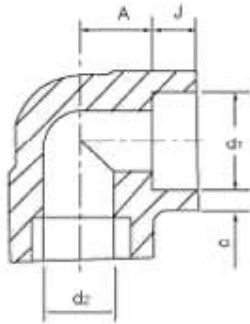
1、Socket welded fitting is used in British system. But we can make according to Metric system if noted by customer. The dimension of socket end is according to the right column.

2、The dimension of socket end is according to the related pipe dimension in British system.

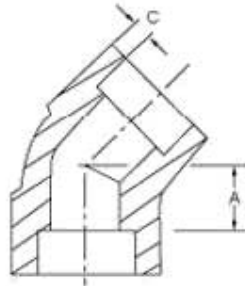
3、D is according to wall thickness. So note the wall thickness but not pressure when you order metric socket welded fitting.



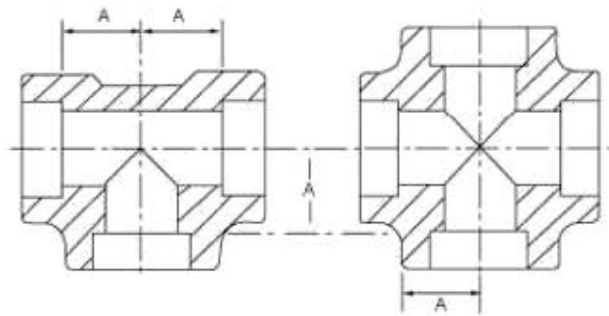
锻制管件  
FORGED FITTINGS



90°弯头  
90° Elbow



45°弯头  
45° Elbow



三通  
Tee

四通  
Cross

承插焊弯头、三通、四通 SOCKET WELDING ELBOW, TEE, CROSS

公称直径 Nominal Diameter		承插孔深度 Depth of Socket	承插孔直径 Dimension of Socket	壁厚 Wall Thickness			中心至承插孔底 Center to Bottom of Socket					
				Cmin			A			90°弯头、三通、四通 90°Elbow, Tee, Cross		
DN	NPS	Jmin	d1	3000LB Sch80	6000LB Sch160	9000LB XXS	3000LB Sch80	6000LB Sch160	9000LB XXS	3000LB Sch80	6000LB Sch160	9000LB XXS
6	1/8	10	10.7	3.2	3.5	—	11	11	—	8	8	—
8	1/4	10	14.1	3.3	4.0	—	11	15	—	8	8	—
10	3/8	10	17.5	3.5	4.4	—	13	15	—	8	12	—
15	1/2	10	21.8	4.1	5.2	8.2	16	19	25	11	13	16
20	3/4	13	27.4	4.3	6.1	8.6	19	22	28	13	14	18
25	1	13	34.2	5.0	7.0	10.0	22	27	32	14	18	22
32	1.1/4	13	42.9	5.3	7.0	10.6	27	32	35	18	21	22
40	1.1/2	13	48.3	5.6	7.8	11.2	32	38	38	21	25	25
50	2	16	61.1	6.1	9.5	12.2	38	41	41	25	29	29
65	2.1/2	16	76.9(73.8)	7.7	12.5	—	41	57	—	29	32	—
80	3	16	89.8	8.3	13.8	—	57	64	—	32	35	—
100	4	19	115.5	9.4	—	—	66	—	—	42	—	—

说明:

承插壁厚外圈平均值不低于所列值, 最小值仅限于局部区域。

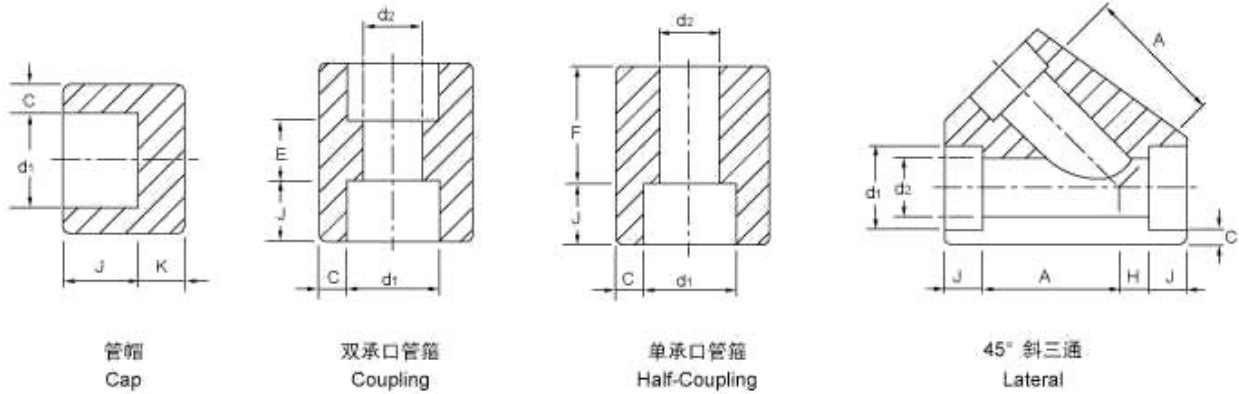
Average of socket wall thickness around periphery shall be no less than listed values. The minimum values are permitted in localized areas.

上述尺寸符合ASME B16.11、GB/T14383、SH3410、HG/T21634、JIS B2316、BS3799标准。

Above dimensions acc. to ASME B16.11、GB/T14383、SH3410、HG/T21634、JIS B2316、BS3799.



锻制管件  
FORGED FITTINGS



承插焊管帽、管箍、斜三通 SOCKET WELDING CAP, COUPLING, LATERAL

公称直径 Nominal Diameter		承插孔 深度 Depth of Socket	承插孔 直径 Dimension of Socket	壁厚 Wall Thickness			管帽壁厚 End Wall Thickness			中间长度 The length of midst		中心至承插孔底 Center to Bottom of Socket			
				Cmin			Kmin			双承口 管箍 Coupling	单承口 管箍 Half-Coupling	45°斜三通 Lateral			
DN	NPS	Jmin	d1	3000LB Sch80	6000LB Sch160	9000LB XXS	3000LB Sch80	6000LB Sch160	9000LB XXS	E	F	3000LB Sch80	6000LB Sch160	3000LB Sch80	6000LB Sch160
6	1/8	10	10.7	3.2	3.5	—	5.0	6.5	—	6	16	—	—	—	—
8	1/4	10	14.1	3.3	4.0	—	5.0	6.5	—	6	16	32	—	8	—
10	3/8	10	17.5	3.5	4.4	—	5.0	6.5	—	6	17.5	37	—	8	—
15	1/2	10	21.5	4.1	5.2	8.2	6.5	8.0	11.0	10	23.5	41	51	11	13
20	3/4	13	27.4	4.3	6.1	8.6	6.5	8.0	12.5	10	23.5	51	60	13	14
25	1	13	34.2	5.0	7.0	10.0	9.5	11.0	14.0	13	29	60	71	14	18
32	1.1/4	13	42.9	5.3	7.0	10.6	9.5	11.0	14.0	13	30	71	81	18	21
40	1.1/2	13	48.3	5.6	7.8	11.2	11.0	12.5	16.0	13	32	81	98	21	25
50	2	16	61.1	6.1	9.5	12.2	12.5	16.0	19.0	19	41	98	120	25	29
65	2.1/2	16	76.9(73.8)	7.7	12.5	—	16.0	19.0	—	19	42.5	—	—	—	—
80	3	16	89.8	8.3	13.8	—	19.0	22.0	—	19	44.5	—	—	—	—
100	4	19	115.5	9.4	—	—	22.0	28.5	—	19	47.5	—	—	—	—

说明:

承插壁厚外围平均值不低于所列值, 最小值仅限于局部区域。

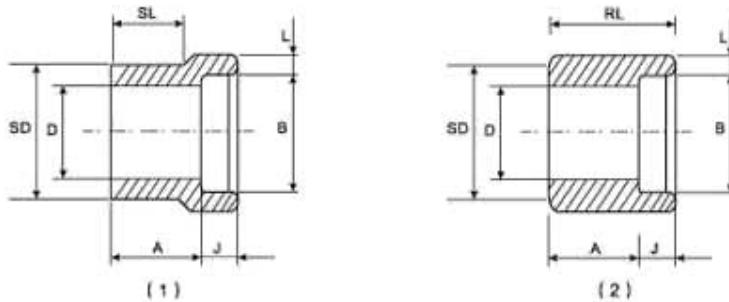
Average of socket wall thickness around periphery shall be no less than listed values. The minimum values are permitted in localized areas.

上述尺寸符合ASME B16.11、GB/T14383、SH3410、HG/T21634、JIS B2316、BS3799标准。

Above dimensions acc. to ASME B16.11、GB/T14383、SH3410、HG/T21634、JIS B2316、BS3799.



锻制管件  
FORGED FITTINGS



变径承插接头 REDUCING SOCKET INSERTS (1, 2)

公称直径 Nominal Diameter		类型 Type		SD	A		Cmin		SL		RL		插口 直径 Diameter of faucet	插口 深度 The deepness of faucet	孔径 Diameter of Hole (D)	
DN	NPS	3000LB	6000LB		3000LB	6000LB	3000LB	6000LB	3000LB	6000LB	3000LB	6000LB	B	J	3000LB	6000LB
		Sch80	Sch160													
10x8	3/8x1/4	1	1	17.1	19	21	3.8	4.6	14	16	—	—	14.2	10	9.0	6.5
15x10	1/2x3/8	1	1	21.3	21	23	4.0	5.0	16	16	—	—	17.7	10	12.5	9.0
15x8	1/2x1/4	2	1	21.3	21	21	3.8	4.6	16	16	—	—	14.2	10	9.0	6.0
20x15	3/4x1/2	1	1	26.7	22	25	4.7	6.0	17	19	—	—	21.8	10	16.0	11.5
20x10	3/4x3/8	2	1	26.7	16	22	4.0	5.0	—	19	21	—	17.7	10	12.5	9.0
20x8	3/4x1/4	2	2	26.7	16	22	3.8	4.6	—	—	21	32	14.2	10	9.0	6.5
25x20	1x3/4	1	1	33.4	24	28	4.9	7.0	19	21	—	—	27.2	13	21.0	15.5
25x15	1x1/2	2	2	33.4	16	28	4.7	6.0	—	21	28	—	21.8	10	16.0	11.5
25x10	1x3/8	2	2	33.4	18	22	4.0	5.0	—	—	28	33	17.7	10	12.5	9.0
25x8	1x1/4	2	2	33.4	19	24	3.8	4.6	—	—	28	33	14.2	10	9.0	6.0
32x25	1.1/4x1	1	1	42.4	25	30	5.7	7.9	21	22	—	—	33.9	13	26.5	20.5
32x20	1.1/4x3/4	2	2	42.4	18	21	4.9	7.0	—	—	32	35	27.2	13	21.0	15.5
32x15	1.1/4x1/2	2	2	42.4	19	22	4.7	6.0	—	—	32	35	21.8	10	16.0	11.5
32x10	1.1/4x3/8	2	2	42.4	21	24	4.0	5.0	—	—	32	35	17.7	10	12.5	9.0
32x8	1.1/4x1/4	2	2	42.4	22	25	3.8	4.6	—	—	32	35	14.2	10	9.0	6.0
40x32	1.1/2x1.1/4	1	1	48.3	28	35	6.1	7.9	22	25	—	—	42.7	13	35.0	29.5
40x25	1.1/2x1	2	1	48.3	18	29	5.7	7.9	—	25	33	—	33.9	13	26.5	20.5
40x20	1.1/2x3/4	2	2	48.3	19	25	4.9	7.0	—	—	33	40	27.2	13	21.0	15.5
40x15	1.1/2x1/2	2	2	48.3	21	27	4.7	6.0	—	—	33	40	21.8	10	16.0	11.5
40x10	1.1/2x3/8	2	2	48.3	22	28	4.0	5.0	—	—	33	40	17.7	10	12.5	9.0
50x40	2x1.1/2	1	1	60.3	32	47	6.4	8.9	25	40	—	—	48.8	13	41.0	34.0
50x32	2x1.1/4	2	2	60.3	21	24	6.1	7.9	—	—	38	41	42.7	13	35.0	29.5
50x25	2x1	2	2	60.3	22	25	5.7	7.9	—	—	38	41	33.9	13	26.5	21.0
50x20	2x3/4	2	2	60.3	24	27	4.9	7.0	—	—	38	41	27.2	13	21.0	15.5
50x15	2x1/2	2	2	60.3	25	28	4.7	6.0	—	—	38	41	21.8	10	16.0	11.5

上述尺寸符合MSS SP-97标准。  
Above dimensions acc. to MSS SP-97.



## 支管台(管座)

OUTLET (MSS SP97、GB19326、Q/FG11-16)

支管台是国外近年来应用较多的，用于支管连接的补强型管件，代替传统使用的异径三通、补强板、加强管段等支管连接型式，具有安全可靠、造价低、施工简单、改善介质流动、系列标准化、设计选用方便等突出优点，尤其在高压、高温、大口径、厚壁管道中使用日益广泛，取代了传统的支管连接方法。支管台本体采用优质锻件，用材与管道材料相同，本公司提供碳钢、合金钢、不锈钢等多种材质方便用户选用。

支管台与主管均采用焊接，支管台与支管或其他管（如短管、丝堵等）、仪表、阀门的连接有对焊、承插焊、螺纹等多种型式。

Outlet is used widely abroad in recent years. It is used to connect the reinforced fitting. It can replace the reducing tee, reinforce plate and reinforced pipe. It is used widely more and more in high pressure high temperature large diameter and thick wall pipe. As it is reliability, cheap, simple, good for flow, seriation, standardization and choose easily. It takes place of traditional connecting ways. The body of outlets is made in excellent Forgings. The material is same sa pipe's. Our company can make outlet from carbon steel, Alloy steel and stainless steel.

Outlet is welded to the main pipe. And is connected to the branch or other fittings such as nipple thread plug, Instrument and valve by Butt-welding, Socket-welding and thread.

支管台形式有标准型、短管型、斜接型、弯头型，详见下表：

The type of outlet is standard, Nipolet, Latrolet and Elbolet. Detail as following list:

型式 Type	连接型式 (支管台与支管) Connected type		
	承插焊 GB19326 Socket welded	管螺纹 GB19326 Pipe thread	对焊 GB19326 Butt-welding
标准型 Standard	SOL (MSS SP-97、Q/FG11 标准)	TOL (MSS SP-97、Q/FG12 标准)	WOL (MSS SP-97、Q/FG13 标准)
短管型 Nipolet	SNL (Q/FG14 标准)	TNL (Q/FG14、SHB-PO1)	WNL (Q/FG14 标准)
斜接型 (45°) Latrolet	SEL (Q/FG15 标准)	TLL (Q/FG15、SHB-PO1)	WLL (Q/FG15 标准)
弯头型 (1.5D) Elbolet		TEL (Q/FG16、SHB-PO1)	WEL (Q/FG16 标准)

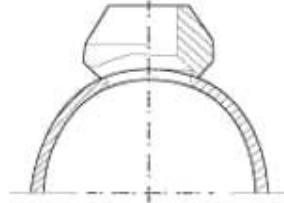
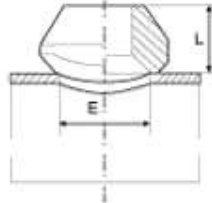
样本所示均为适用于英制管的支管台产品系列，本公司也可生产适用于公制管的支管台产品（管螺纹型除外），用户在定货时应说明下列项目：

- ▶ 型式代号（支管台及连接型式）；
- ▶ 支管及支管公称尺寸（如为公制管应注明外径尺寸）
- ▶ 支管及支管壁厚等级（如为公制管应注明壁厚尺寸）
- ▶ 管螺纹代号（仅指螺纹型）
- ▶ 高度（仅指短管支管台）



We only note the British outlet in the catalogue. But we also can make Metric outlet except threaded type. Following items shall be specified when purchase:

- ▶ Type;
- ▶ Nominal dimension of main and branch pipe. If it's metric, specify the out diameter;
- ▶ Schedule of main and branch pipe. If it's metric, specify the wall thickness;
- ▶ Thread code only for threadedlet;
- ▶ Height only for Nipolet.



## 对焊支管台 WELDOLET

执行标准: MSS SP97、GB19326、Q/FG13

公称直径 Nominal Diameter		适用主管公称直径 Nominal Diameter of Suited Main Pipe z		L			E		
DN	NPS	mm	in	STD	XS	XXS	STD	XS	XXS
6	1/8	20	3/4	15.9	—	—	15.9	—	—
8	1/4	20	3/4	15.9	—	—	15.9	—	—
10	3/8	25	1	19.1	—	—	19.1	—	—
15	1/2	32	1.1/4	19.1	19.1	28.6	23.8	23.8	14.3
20	3/4	40	1.1/2	22.2	22.2	31.8	30.2	30.2	19.1
25	1	40	1.1/2	27.0	27.0	38.1	36.5	36.5	25.4
32	1.1/4	65	2.1/2	31.8	31.8	44.5	44.5	44.5	33.3
40	1.1/2	65	2.1/2	33.3	33.3	50.8	50.8	50.8	38.1
50	2	80	3	38.1	38.1	58.6	65.1	65.1	42.9
65	2.1/2	100	4	41.3	41.3	61.9	76.2	76.2	54.0
80	3	125	5	44.5	44.5	73.0	93.7	93.7	77.0
90	3.1/2	150	6	47.0	47.0	—	101.6	101.6	—
100	4	150	6	50.8	50.8	84.1	120.7	120.7	98.4
125	5	200	8	57.2	57.2	93.7	141.3	141.3	122.2
150	6	200	8	60.3	77.8	104.8	169.9	169.9	146.1
200	8	250	10	69.9	98.4	—	220.7	220.7	—
250	10	300	12	77.8	93.7	—	274.6	265.1	—
300	12	350	14	85.7	103.2	—	325.4	317.5	—
350	14	400	16	88.9	100.0	—	357.2	350.9	—
400	16	450	18	93.7	106.4	—	408.0	403.2	—
450	18	500	20	96.8	111.1	—	458.8	455.6	—
500	20	600	24	101.6	119.1	—	508.8	509.6	—
600	24	650	26	115.9	139.7	—	614.4	614.4	—

### 说明:

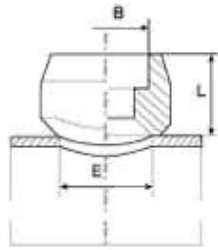
- 1、表列“适用主管公称直径”为一般用途，如需用于更小的主管尺寸，应与制造厂协商。
- 2、表列 E 值适用于国际通用系列的钢管尺寸（英制管），如需用于国内沿用系列钢管（公制管），E 值将有所调整，但 L 值不变。
- 3、上表所列对焊支管台有 STD、XS、XXS 三种等级，选用较为复杂，为此，用户选用时，必须将主管及支管的公称直径及壁厚等级注明，本公司可根据上述参数确定符合用户需要的支管台等级及有关结构尺寸，如用于公制管，用户应注明主管及支管的外径和壁厚尺寸。
- 4、定货时必须注明主管及支管尺寸、压力等级及材料编号。如：WOL 14"x4" Sch40xSTD 16Mn（用于英制管）  
WOL 377x108 12x8 16Mn（用于公制管）

### Note:

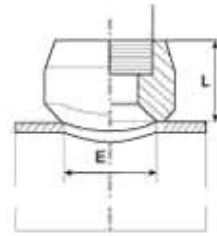
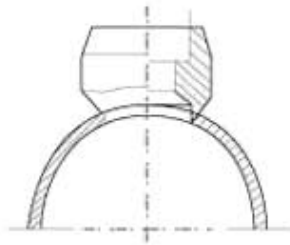
- 1、Normal diameter of suited main pipe as list is for ordinary use. If used to smaller main pipe, discuss it with manufacturer.
- 2、E is for international pipe. If used to metric pipe, E will be changed, But L is constant.
- 3、Three grades-STD, XS, XXS for weldolet. It's complicated to choose. So you shall specify DN dimension you need. If used for metric pipe. Specify OD and thickness.
- 4、Specify dimension of main and branch pipe, grade and material. For example: WOL 14"x4" Sch40xSTD 16Mn (British series)  
WOL 377x108 12x8 16Mn (Metric series)



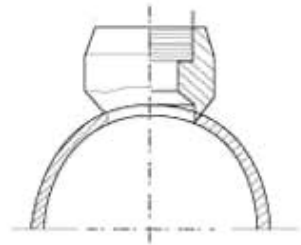
# 锻制管件 FORGED FITTINGS



SOL



TOL



## 承插焊支管台 SOCKOLET

执行标准: MSS SP97、GB19326、Q/FG11

支管公称口径 Nominal Diameter of Branch		适用主管公称口径 Nominal Diameter of Suited Main Pipe 不小于之		L		E	
DN (mm)	NPS (in)	mm	in	3000LB	6000LB	3000LB	6000LB
6	1/8	20	3/4	19.1	—	15.9	—
8	1/4	20	3/4	19.1	—	15.9	—
10	3/8	25	1	20.6	—	19.1	—
15	1/2	32	1.1/4	25.4	31.8	23.8	19.1
20	3/4	40	1.1/2	27.0	36.5	30.2	25.4
25	1	50	2	33.3	39.7	36.5	33.3
32	1.1/4	65	2.1/2	33.3	41.3	44.5	38.1
40	1.1/2	65	2.1/2	34.9	42.9	50.8	49.2
50	2	80	3	38.1	52.4	65.1	69.9
65	2.1/2	100	4	39.7	—	76.2	—
80	3	125	5	44.5	—	93.7	—
100	4	150	6	47.6	—	120.7	—

### 说明:

- 承插口尺寸B根据支管尺寸(英制管或公制管)的规定。
- 表列“适用主管公称口径”为一般用途,如需用于更小的主管尺寸应与制造厂协商。
- 按下表选用支管台的压力等级,如用于公制管,用户应注明支管壁厚尺寸。

压力等级 Pressure Grade	适用支管壁厚等级 Suitable shedule of branch
3000LB	Sch40、Sch80、STD、XS
6000LB	Sch160 XXS

- 表列E值适用于国际通用系列的钢管尺寸(英制管),如需用国内沿用系列钢管(公制管),E值将有所调整,但L值不变。
- 定货时必须说明主管及支管公称尺寸、压力等级及材料牌号(如用于公制管,应注明主管及主管外径尺寸和壁厚)。

## 螺纹支管台 THREDOLET

执行标准: MSS SP97、GB19326、Q/FG12

支管公称口径 Nominal Diameter of Branch		适用主管公称口径 Nominal Diameter of Suited Main Pipe 不小于之		L		E	
DN (mm)	NPS (in)	mm	in	3000LB	6000LB	3000LB	6000LB
6	1/8	20	3/4	19.1	—	15.9	—
8	1/4	20	3/4	19.1	—	15.9	—
10	3/8	25	1	20.6	—	19.1	—
15	1/2	32	1.1/4	25.4	31.8	23.8	19.1
20	3/4	40	1.1/2	27.0	36.5	30.2	25.4
25	1	50	2	33.3	39.7	36.5	33.3
32	1.1/4	65	2.1/2	33.3	41.3	44.5	38.1
40	1.1/2	65	2.1/2	34.9	42.9	50.8	49.2
50	2	80	3	38.1	52.4	65.1	69.9
65	2.1/2	100	4	46.0	—	76.2	—
80	3	125	5	50.8	—	93.7	—
100	4	150	6	57.2	—	120.7	—

### 说明:

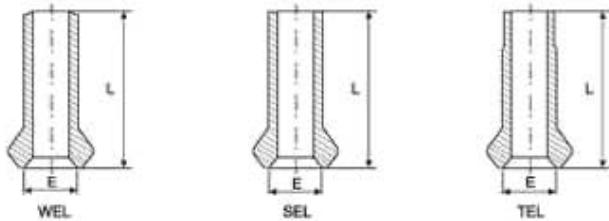
- 锥管螺纹可按ANSI B1.20.1 NPT或ISO7/1 Rp或Rc锥管螺纹,尺寸同支管公称口径(in),用户需注明锥管螺纹代号。
- 表列“适用主管公称口径”为一般用途,如需用于更小的主管尺寸应与制造厂协商。
- 按下表选用支管台的压力等级:

压力等级 Pressure Grade	适用支管壁厚等级 Suitable shedule of branch
3000LB	Sch40、Sch80、STD、XS
6000LB	Sch160 XXS

- 螺纹支管台仅适用于国际通用系列的钢管(英制管)。
- 定货时必须注明主管及支管公称尺寸、压力等级、材料牌号、螺纹代号。



# 锻制管件 FORGED FITTINGS



## 短管支管台 NIPOLET

执行标准: MSS SP97, GB19326, Q/FG14

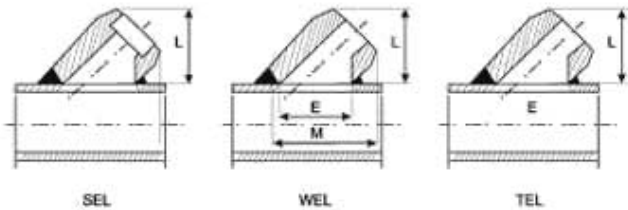
支管公称直径 Nominal Diameter of Branchh		适用主管公称直径 Nominal Diameter of Suited Main Pipe 不小于≥		E		L
DN (mm)	NPS (in)	mm	in	3000LB	6000LB	
15	1/2	32	1.1/4	23.8	14.3	100 150
20	3/4	40	1.1/2	30.2	19.1	
25	1	50	2	36.5	25.4	
32	1.1/4	65	2.1/2	44.5	33.3	
40	1.1/2	65	2.1/2	50.8	38.1	
50	2	80	3	65.1	49.2	

### 说明:

- 短管支管台长度 L 应在订货时说明。  
Specify the length of Nipolet when order
- 短管支管台上端的型式有:  
Type of Nipolet top end  
SNL 平端 Flat end 用于承插焊 For socket weld  
WNL 坡口端 Beveled 用于对焊 For butt weld  
TNL 锥管螺纹 (外) NPT 或 Rc (订货时应予说明 Specify when order)
- 按下表选用支管台的压力等级 (用于英制管):  
To choose the pressure grade to the following list (British series)

压力等级 Pressure Grade	适用支管壁厚等级 Suitable shedule of branch
3000LB	Sch40, Sch80, STD, XS
6000LB	Sch160 XXS

- 表列 E 值适用于国际通用系列的钢管尺寸 (英制管), 如需用于国内沿用系列钢管 (公制管), E 值将有所调整, 但 L 值不变。  
E is for international pipe. If used to metric pipe, E will be changed, But L is constant.
- 订货时必须注明主管及支管公称尺寸、压力等级、长度及材料牌号 (如用于公制管, 应注明主管及支管外径和壁厚尺寸)。  
Specify nominal dimension of main and branch pipe, Pressure grade and material. If used for metric pipe, Specify the outer diameter and wall thickness of main and branch pipe:  
SNL 10"x1.1/2" 3000LB L100 304 (用于英制管 British series)  
TNL 159x25 8x3 L150 20 (用于公制管 Metric series)



## 斜接支管台 LATIOLET

执行标准: MSS SP97, GB19326, Q/FG15

支管公称直径 Nominal Diameter of Branchh		适用主管公称直径 Nominal Diameter of Suited Main Pipe 不小于≥		L	E	M
DN (mm)	NPS (in)	mm	in	3000LB		
8	1/4	32	1.1/4	40	37	59
10	3/8	32	1.1/4	40	37	59
15	1/2	32	1.1/4	40	37	59
20	3/4	40	1.1/2	46	44	70
25	1	50	2	54	54	83
32	1.1/4	65	2.1/2	64	67	97
40	1.1/2	80	3	70	78	108
50	2	100	4	86	100	137

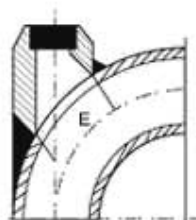
### 说明:

- 斜接支管台上端型式有三种选用时应注明:  
Three type of latiolet top end. Specify when choose.  
WLL 对焊 butt weld  
SLL 承插口 Socket weld  
TLL 锥管螺纹 (内) NPT 或 Rc (订货时应予说明 Specify when order)
- 3000Lb 级斜接支管台适用于下列支管壁厚等级 (用于英制管)  
Latiolet which pressure grade is 3000LB is suitable to following list (British series)

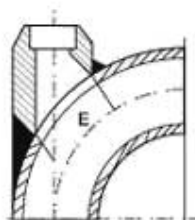
压力等级 Pressure Grade	适用支管壁厚等级 Suitable shedule of branch
3000LB	Sch40, Sch80, STD, XS

- 订货时必须说明主管及支管公称尺寸、压力等级、材料牌号, 如用于公制管, 应注明主管及支管外径和壁厚尺寸。  
Specify nominal dimension of main and branch pipe, Pressure grade, material. If used to metric pipe specify the outer diameter and wall thickness of main branch pipe.  
SLL 4"x1.1/2" 3000LB 20 (用于英制管 British series)  
WLL 108x18 3000LB 20 (用于公制管 Metric series)

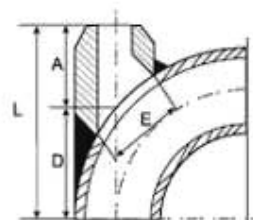




TEL



SEL



WEL

## 弯头支管台 Elbolet

执行标准: MSS SP97, GB19326, Q/FG16

支管公称口径 Nominal Diameter of Branch		适用主管公称口径 Nominal Diameter of Suited Main Pipe 不小于 $\geq$		E	A	L
DN (mm)	NPS (in)	mm	in	3000LB		
8	1/4	32	1.1/4	38	40	A+D
10	3/8	32	1.1/4	38	40	
15	1/2	32	1.1/4	38	40	
20	3/4	40	1.1/2	44	48	
25	1	50	2	57	57	
32	1.1/4	65	2.1/2	73	64	
40	1.1/2	80	3	79	68	
50	2	100	4	106	83	

### 说明:

- 尺寸 D 适于 ANSI B16.9 的长半径 90° 弯头
- 弯头支管台的上端型式有三种, 选用时应注明: WEL 一对焊 SEL 一承插口 TEL 锥管螺纹—(内)NPT 或 Rc、Rp
- 3000LB 级弯头支管台适用于下列支管壁厚等级:

压力等级 Pressure Grade	适用支管壁厚等级 Suitable shedule of branch
3000LB	Sch40, Sch80, STD, XS

- 订货时应注明弯头及支管公称尺寸、压力等级、材料编号, 如用于公制管, 应注明主管及支管外径和壁厚尺寸。

TEL 4"x1.1/2" 3000LB 20 (用于英制管)

SEL 108x18 6x3 20 (用于公制管)

### Note:

- Size D is suitable to 90 Degree LR elbow according to ANSI B16.9.
- Three type of elbolet top end, specify when choose: WEL 一对焊 SEL 一承插口 TEL 锥管螺纹—(内)NPT 或 Rc、Rp
- Elbolet which pressure grade is 3000LB is suitable to the following branch schedule: Sch40, Sch80, STD, XS.
- Specify nominal dimension of main and branch pipe, pressure grade, material and thread code:

TEL 4"x1.1/2" 3000LB 20 (For British series)

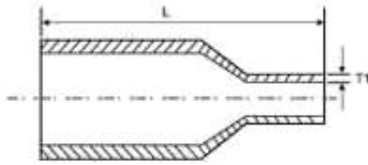
SEL 108x18 6x3 20 (For Metric series)

### 配用弯头尺寸 Mating Elbow Dimension

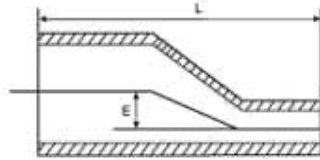
弯头 公称口径	mm	32	40	50	65	80	100	150	200	250	300
	in	1.1/4	1.1/2	2	2.1/2	3	4	6	8	10	12
size	D	50	54	72	93	108	144	218	290	362	434



# 锻制管件 FORGED FITTINGS



同心异径短节  
Concentric Swaged Nipple



偏心异径短节  
Eccentric Swaged Nipple

## 异径短节 SWAGE NIPPLE

公称直径 Nominal Diameter		L	E
DN	NPS		
10x8	3/8x1/4	64	1.7
15x8	1/2x1/4	70	1.9
15x10	1/2x3/8	70	1.05
20x8	3/4x1/4	76	6.5
20x10	3/4x3/8	76	4.8
20x15	3/4x1/2	76	2.7
25x8	1x1/4	89	10.2
25x10	1x3/8	89	8.6
25x15	1x1/2	89	6.5
25x20	1x3/4	89	3.0
32x8	1.1/4x1/4	102	14.2
32x10	1.1/4x3/8	102	12.5
32x15	1.1/4x1/2	102	10.4
32x20	1.1/4x3/4	102	7.7
32x25	1.1/4x1	102	3.9
40x8	1.1/2x1/4	114	17.3
40x10	1.1/2x3/8	114	15.6
40x15	1.1/2x1/2	114	13.5
40x20	1.1/2x3/4	114	12.6
40x25	1.1/2x1	114	6.9
40x32	1.1/2x1.1/4	114	3.0
50x8	2x1/4	165	23.3
50x10	2x3/8	165	21.6
50x15	2x1/2	165	19.5
50x20	2x3/4	165	16.8

公称直径 Nominal Diameter		L	E
DN	NPS		
50x25	2x1	165	13.0
50x32	2x1.1/4	165	9.1
50x40	2x2.1/2	165	6.0
65x15	2.1/2x1/2	178	25.1
65x20	2.1/2x3/4	178	23.2
65x25	2.1/2x1	178	19.4
65x32	2.1/2x1.1/4	178	15.5
65x40	2.1/2x1.1/2	178	12.4
65x50	2.1/2x12	178	6.4
80x15	3x1/2	203	33.8
80x20	3x3/4	203	31.1
80x25	3x1	203	27.3
80x32	3x1.1/4	203	23.4
80x40	3x1.1/2	203	20.3
80x50	3x2	203	14.3
80x65	3x2.1/2	203	7.9
100x15	4x1/2	229	46.5
100x20	4x3/4	229	43.8
100x25	4x1	229	40.0
100x32	4x1.1/4	229	36.1
100x40	4x1.1/2	229	33.0
100x50	4x2	229	27.0
100x65	4x2.1/2	229	20.6
100x80	4x3	229	12.7

### 说明:

- 1、选用时，应予注明，对锥管螺纹还应注明 NPT 或 R。
- 2、异径短节大端及小端型式分别有平端、坡口端、锥管外螺纹端三种。大、小端的各种组合共计有九种配合可能，如下表示：

型式 Type	大端 Large End	小端 Small End	代号 Code
A	平 Plain	平	BEP
B		坡口	LEP/SEB
C		螺纹	LEP/SET
D	坡口 Bevel	平	LEB/SEP
E		坡口	BEB
F		螺纹	LEB/SET
G	螺纹 Thread	平	LET/SEP
H		坡口	LET/SEB
I		螺纹	BET

3、异径短节壁厚一般为 Sch80(3000LB)、Sch160(6000LB)，平端、坡口端或管螺纹端。

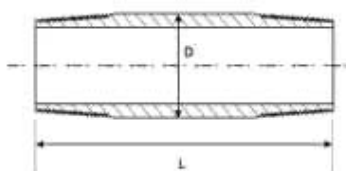
### Note:

- 1、Specify NPT or R when order.
- 2、The end type for swage nipple is Plain, Bevel and NPT. As listed. There are nine kind mating type.
- 3、The wall thickness for swage nipple is Sch80(3000LB) and Sch160(6000LB), Plain, Bevel or Thread.

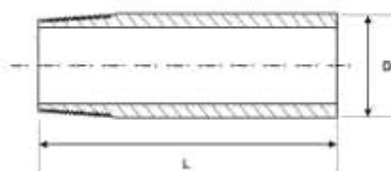
上述尺寸符合 MSS SP95、BS3799 标准。Above dimensions acc.to MSS SP95、BS3799.



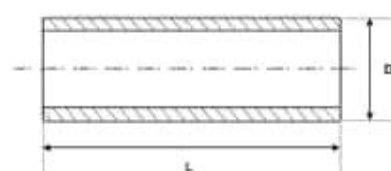
# 锻制管件 FORGED FITTINGS



A 两端管螺纹  
Both end thread



B 一端管螺纹一端平  
One end thread and one end plain



C 两端平  
Both end plain

## 短节 NIPPLE

国际通用系列钢管（英制管）British Pipe

公称直径 Nominal Diameter		外径 Outside Diameter	Sch40 STD Sch80 XS	Sch160 XXS	L
DN	NPS	D			
8	1/4	13.5	O		60 90 120 150 180
10	3/8	17.2	O		
15	1/2	21.3	O	O	
20	3/4	26.7	O	O	
25	1	33.4	O	O	
32	1.1/4	42.2	O	O	
40	1.1/2	48.3	O	O	
50	2	60.3	O	O	

国内沿用系列钢管（公制管）Metric Pipe

公称直径 Nominal Diameter	外径 Outside Diameter	厚度 Thickness	长度 Length
DN	D		
10	14	2-5	100 150 200
15	18		
20	25		
25	32		
32	38		
40	45		
50	57		

说明：

1、短管（英制管）有 A、B、C 三种型式，短管（公制管）仅有 C 型。

2、订货示例：A(NPT) 1/2" Sch80 L150 304 不锈钢（英制管），φ18x2 L100 20 钢（公制管）

Note:

1、The type of nipple is A、B、C for British Pipe and only type C for Metric nipple.

2、Example: A(NPT) 1/2" Sch80 L150 304 S.S.(British Pipe), φ18x2 L100 20# (Metric Pipe)

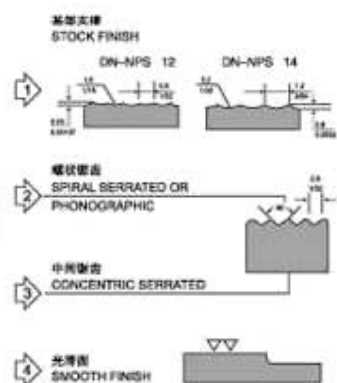
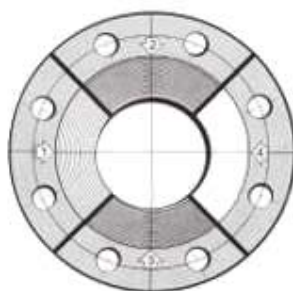


锻造法兰  
FORGED FLANGE

### 法兰剖面图 FLANGE CUT PLANE



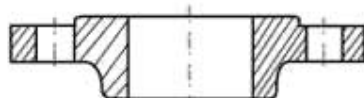
### 密封面参数 PARAMETER OF SEALED COVER



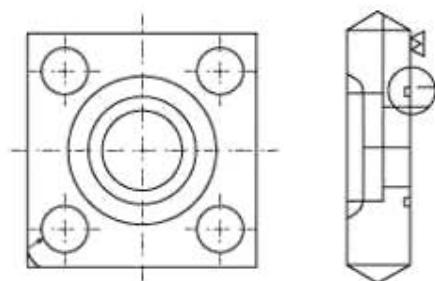
### 法兰结构图 FLANGE STRUCTURE



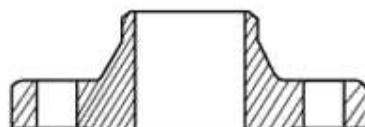
板式平焊法兰(PL)  
Plate-type Flat Welding Flange



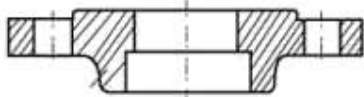
带颈平焊法兰(SO)  
Slip-on Neck Flange



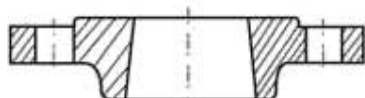
高压方法兰凸  
High-pressure Square Flange Convex



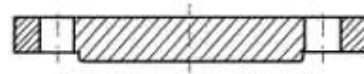
对焊法兰(WN)  
Weld Neck Flange



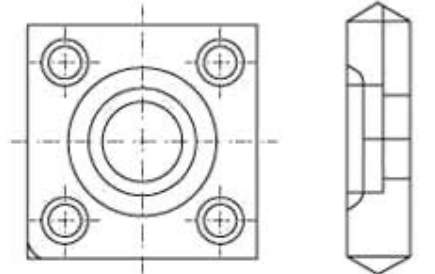
承插焊法兰(SW)  
Socket Welding Flange



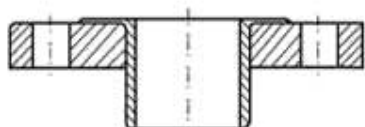
螺纹法兰(TH)  
Threaded Flange



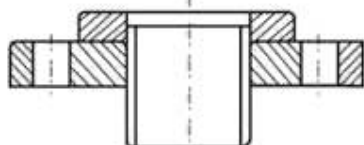
法兰盖(BL)  
Blind Flange



高压方法兰凹  
High-pressure Square Flange Concave



对焊环松套法兰(PJ/SE)  
Butt Welding Ring Loose Flange



平焊环松套法兰(PJ/PR)  
Flat Welding Ring Loose Flange

注：由于法兰的制造标准及规格较多，本公司在此不提供详细规格参数，用户如需要可另提供，非标法兰可按用户图纸加工制造。



美标系列 AMERICAN STANDARD SERIES

标准号 Standard Code	通径范围 Diameter Range	压力等级 Pressure Grade
ANSI B16.5(88)	1/2"~24"	Class 150、300、600、900、1500、2500
ANSI B16.47(90)	26"~60"	Class 150、300、600、900
ASME B16.5(96)	1/2"~24"	Class 150、300、600、900、1500、2500
ISO7005-1(92)	1/2"~24"	PN2.0 5.0 11.0 15.0 26.0 42.0
BS4504-3.1(89)	1/2"~24"	Class 150、300、600、900、1500、2500
JPI 7S-15-93	1/2"~24"	Class 150、300、600、900、1500、2500
NF E29-203	1/2"~24"	PN2.0 5.0 11.0 15.0 26.0 42.0
API605-81	26"~60"	Class 150、300、600
ASME B16.36(96)	1"~24"	Class 300、400、600、900、1500、2500

德标系列 GERMAN STANDARD SERIES

标准号 Standard Code	通径范围 Diameter Range	压力等级 Pressure Grade
DIN 2630 WN	DN1200-DN4000	1 Bar
DIN 2631 WN	DN10-DN3600	6 Bar
DIN 2632WN	DN200-DN3000	10 Bar
DIN 2633WN	DN10-DN2000	16 Bar
DIN 2634WN	DN200-DN1000	25 Bar
DIN 2635WN	DN10-DN500	40 Bar
DIN 2636WN	DN10-DN400	64 Bar
DIN 2637WN	DN10-DN350	100 Bar
DIN 2638WN	DN10-DN300	160 Bar
DIN 2573PL	DN10-DN500	6 Bar
DIN 2576PL	DN10-DN500	10 Bar
DIN 2527BL	DN10-DN500	6 10 16 25 40 Bar
DIN 2501WN	DN15-DN500	10 16 25 40 63 100 160 250 320 400 Bar
DIN 2566TH	DN15-DN150	10 16 Bar
DIN 2655PL	DN15-DN500	0.25 0.6 1.0 1.6 2.5 4.0 Bar
DIN 2656PL	DN15-DN500	0.25 0.6 1.0 1.6 2.5 4.0 Bar



锻造法兰  
FORGED FLANGE

### 日标系列 JAPANESE STANDARD SERIES

标准号 Standard Code	通径范围 Diameter Range	压力等级 Pressure Grade
JIS B 2220 PL	DN10-DN400	5K
JIS B 2220 SO	DN450-DN1000	5K
JIS B 2220 PL	DN10-DN225	10K
JIS B 2220 SO	DN250-DN1000	10K
JIS B 2220 SO	DN10-DN1200	16K 20K 30K
JIS B 2220 WN	DN15-DN400	30K

### 国标系列 NATIONAL STANDARD SERIES

标准号 Standard Code	通径范围 Diameter Range	压力等级 Pressure Grade
GB/T 9112-9113.4-2000	DN10-DN2000	PN 0.25 0.6 1.0 2.5 4.0 6.3 10.0 16.0 Mpa
JB/T 74-86.2-94	DN10-DN1600	PN 0.25 0.6 1.0 2.5 4.0 6.3 10.0 16.0 20.0 Mpa
HG 20592-20626-97	DN10-DN2000	PN 0.25 0.6 1.0 2.0 2.5 4.0 5.0 6.3 10.0 11.0 15.0 16.0 25.0 26.0 42.0 Mpa
SH 3406-96	DN10-DN1500	PN 1.0 2.0 5.0 6.8 10.0 15.0 25.0 42.0 Mpa
GB/T 17241.1-17241.7	DN10-DN4000	PN 0.25 0.6 1.0 1.6 2.0 2.5 4.0 5.0 Mpa
GB/T 15530.1-15530.8	DN10-DN1800	PN 0.6 1.0 1.6 2.0 2.5 4.0 5.0 Mpa

### 电力部系列 POWER MINISTRY STANDARD SERIES

标准号 Standard Code	通径范围 Diameter Range	压力等级 Pressure Grade
D-GD86-0510-0537	DN15-DN2000	PN 0.25 0.6 1.0 1.6 2.5 4.0 6.4 10.0 Mpa
DG0511-0541	DN15-DN1000	PN 0.25 0.6 1.0 1.6 2.5 4.0 6.4 10.0 20.0 32.0 Mpa

### 压力容器系列 PRESSURE VESSEL STANDARD SERIES

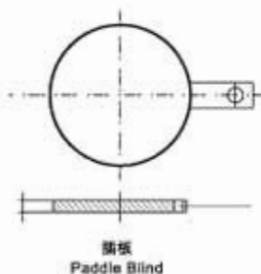
标准号 Standard Code	通径范围 Diameter Range	压力等级 Pressure Grade
JB/T 4701-2000(甲型)	DN300-DN2000	PN 0.25 0.6 1.0 1.6 10.0 Mpa
JB/T 4702-2000(乙型)	DN300-DN3000	PN 0.25 0.6 1.0 1.6 2.5 4.0 Mpa
JB/T 4703-2000(长颈)	DN300-DN2000	PN 0.6 1.0 1.6 2.5 4.0 6.4 Mpa

### 船用系列 SHIPPING STANDARD SERIES

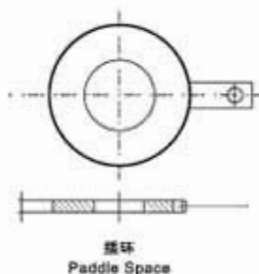
标准号 Standard Code	通径范围 Diameter Range	压力等级 Pressure Grade
GB573-581-76	DN20-DN500	PN 0.6 1.0 1.6 2.5 4.0 6.4 Mpa
GB2506-2507-89	DN10-DN2000	PN 0.25 0.6 1.0 1.6 2.5 Mpa
GB4450-84	DN20-DN500	PN 0.6 1.0 1.6 Mpa
GB10746-10749-89	DN10-DN600	PN 0.6 1.0 1.6 2.5 4.0 6.4 Mpa



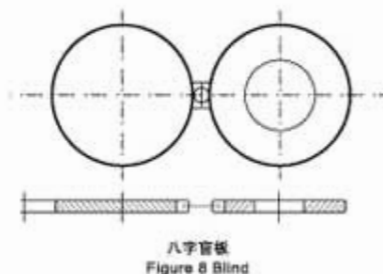
锻造法兰  
FORGED FLANGE



插板  
Paddle Blind



插环  
Paddle Space



八字盲板  
Figure 8 Blind

### 插板、插环、八字盲板 Blind, Figure 8 Blind

插板、插环、八字盲板的厚度(美国体系管法兰用) Blind, Figure 8 Blind (For Pipe Flange of American System) mm

公称直径 Nominal Diameter		150LB	300LB	600LB	900LB	1500LB	2500LB
DN	NPS	2.0MPa	5.0MPa	10.0MPa	15.0MPa	25.0MPa	42.0MPa
15	1/2	3	6	6	6	6	10
20	3/4	3	6	6	6	10	10
25	1	3	6	6	6	10	10
32	1.1/4	6	6	10	10	10	13
40	1.1/2	6	6	10	10	13	16
50	2	6	10	10	13	13	16
65	2.1/2	6	10	13	13	16	19
80	3	6	10	13	16	19	22
90	3.1/2	10	13	16	—	—	—
100	4	10	13	16	19	22	28
125	5	10	16	19	22	28	35
150	6	13	16	22	25	35	41
200	8	13	22	28	35	41	54
250	10	16	25	35	41	51	67
300	12	19	28	41	48	60	79
350	14	19	32	44	54	67	—
400	16	22	38	51	60	76	—
450	18	25	41	54	67	86	—
500	20	28	44	64	73	95	—
600	24	32	51	73	89	111	—

公称直径 Nominal Diameter		0.6MPa	1.0MPa	1.6MPa	2.5MPa	4.0MPa
DN						
15		8	8	8	8	8
20		8	8	8	8	8
25		8	8	8	8	9/8
32		8	8	8	8	10/8
40		8	8	8	9/8	10/8
50		8	8	9/8	10/8	12/10
65		8	8	10/8	11/9	13/11
80		8	8	10/8	12/10	14/12
100		10/8	8	12/10	14/12	16/14
125		11/9	9/8	13/11	16/14	19/17
150		12/10	10/8	15/13	17/15	21/19
200		14/12	12/10	17/15	21/19	27/25
250		17/15	13/11	20/18	25/23	32/30
300		19/17	15/13	23/21	29/27	37/35
350		21/19	17/15	26/24	33/31	42/40
400		23/21	18/16	29/27	36/34	48/46
450		25/23	20/18	32/30	39/37	50/48
500		28/26	22/20	35/33	43/41	54/52
600		32/30	25/23	41/39	51/49	65/62

**说明:**

- 1、本系列产品符合API590要求,用于符合下列要求的突面法兰:ANSI B16.5、SH3406、ISO7005-1、GB9112-9124、HG20615(美洲体系)。
- 2、盲板、插环及八字盲板厚度均已包括腐蚀裕量:  
碳钢、低合金钢、低温钢裕量为1.3mm;  
不锈钢裕量为0mm
- 3、本系列产品适用于平垫片,如用于其它型式垫片(如八角垫等)应与制造厂协商,并调整厚度。
- 4、也可按HG21547-93要求生产。

**说明:**

- 1、本系列产品符合HG21547-93要求,用于符合下列要求的突面法兰:GB9113-9122、HG20592(欧洲体系)、ISO7005-1、DIN、JB管法兰。
- 2、盲板、插环及八字盲板厚度均已包括腐蚀裕量:  
碳钢、低合金钢、低温钢裕量为2.0mm;  
不锈钢裕量为0mm。  
上述表中有分子/分母P者,分子为碳钢,低合金钢厚度,分母为不锈钢厚度。
- 3、本系列产品适用于平垫片,如用于其它型式垫片(如八角垫等)应与制造厂协商,并调整厚度。



## 锻造法兰 FORGED FLANGE

绝缘法兰是对同时具有埋地钢管道要求的密封性能和电法腐蚀防护工程所要求的电绝缘性能的管道法兰接头的统称。它包括一对钢质法兰、两法兰间的绝缘密封件、法兰紧固件和紧固件绝缘零件以及与两片法兰已分别相焊的一对钢质短管。

绝缘法兰与绝缘接头是我公司多年来为石油、化工等行业生产的产品，它结构简单，使用安全，性能可靠，得到用户广泛好评。绝缘法兰产品已形成系列，当有特殊情况时，可依据用户要求另行设计制造。

Insulating flange is a generic term of pipe flange joints with requirements in sealing performance of buried steel pipes and electrical insulation properties of electro-corrosion pipes. It include a pair of steel flanges, an insulating and sealing article between two flanges, a flange fastener, insulating parts of fastener and a short steel pipe between two flanges with each end welded.

The insulating flanges and joints are specially designed and produced for petroleum, chemical and other industries related by us. With their simple structures, safe operations and reliable performance, they have always enjoyed a great popularity among all customers. These insulating flanges have already matured, and in case of any special requirements, they may be customized upon all customers' demands.



### 一、产品用途

绝缘法兰主要应用于燃气输配管线和燃气调压、计量、存储等设备之间，其主要作用是将燃气输配管线的各段间、设备与管线间相互绝缘隔离，保护其不受化学腐蚀，延长管线和设备使用寿命。

产品符合SY/T0516-1997《绝缘法兰设计技术规定》标准。

### Usage

Insulating flanges are mainly applied to gas transmission pipelines, gas regulators, gauges, storages, etc., with their main functions to separate and insulate different segments of gas transmission pipes, devices and lines, protect them from any chemical corrosion and prolong their service life. Follow the standard SY/T0516-1997 "The technic of design for Insulating flange"

### 二、分类

本产品按其绝缘密封件结构的不同分为比压密封型绝缘法兰（简称I型绝缘法兰）和自紧密封型绝缘法兰（简称II型绝缘法兰）两种。I型绝缘法兰适用压力等级PN≤2.5MPa。

### Category

These products may be classified into two groups by the insulating sealing parts, which are specific-pressure sealed insulating flanges (for short, I-type insulating flanges) and self-tightening seal insulating flanges (for short, II-type insulating flanges). Scope of application of the I-type insulating flanges: nominal pressure (PN) ≤2.5MPa.

### 三、特点

- 1、具有埋地管道电法腐蚀防护工程所要求的电绝缘性能。
- 2、能在管输介质要求的温度、压力下长期可靠的工作，有足够的强度和密封性能。
- 3、结构合理，组装、拆卸、更换零件方便。

### Features

- 1、With electrical insulation properties of electro-corrosion pipes;
- 2、With durable and reliable performance at a designed temperature and pressure for pipeline mediums, sufficient strength and good air-proof ability;
- 3、With rational structure, easy assembly/disassembly and replacement.

### 四、主要技术参数

- 1、适用介质：天然气、城市煤气、液化石油气、轻质油等。
- 2、介质温度：-10°~+60°C。
- 3、环境温度：-20°~+60°C。
- 4、绝缘电阻：≥500KΩ
- 5、击穿电压：≥3KV。
- 6、压力范围：PN0.6MPa、PN1.0MPa、PN1.6MPa、PN2.5MPa
- 7、产品规格：DN50 - DN1200

### Mainly Specification

- 1、Suitable for natural gas, city gas, LPG and gently oil.
- 2、Medium Temperature: -10°~+60°C。
- 3、Ambient Temperature: -20°~+60°C。
- 4、Insulating Resistance: ≥500KΩ
- 5、Breakdown Voltage: ≥3KV
- 6、Pressure Range: PN0.6MPa、PN1.0MPa、PN1.6MPa、PN2.5 Mpa.
- 7、Specs: DN50 - DN1200





## 锻造法兰 FORGED FLANGE

绝缘接头是根据绝缘法兰在使用中存在的问题进行改进的换代产品，是钢质管道阴极保护系统中必不可少的重要压力元件。广泛应用于钢制管道的阴极保护系统。我公司的绝缘接头参照国外最新产品结构，采用了独特设计，克服了绝缘法兰刚度小、易泄漏、不能埋地、寿命短等弊病，实现了埋地免维护的功能，使绝缘接头的使用寿命与配套的管线相同。

The insulating joint is a new generation developed product to resolve use problems of old insulating flange. It is the essential pressure component necessary for steel pipeline cathodic protection system, broadly applicable to steel pipeline cathodic protection systems. Our company's insulating joint adopts a unique design based on referencing foreign latest product structure to overcome problems of inadequate rigidity, prone to leak, unable to be buried under ground, short service life, etc. The insulating connectors have realized buried parts maintenance-free function and allow a service life matching the pipelines.

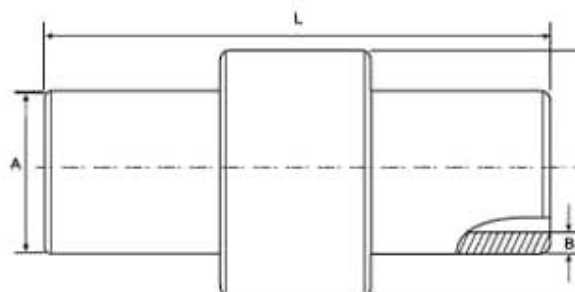


### 型号说明与外型尺寸:



DN400B-64代表公称直径为DN400，压力等级为6.4Mpa的整体式绝缘接头，采用公制管。

For example: DN400B-64 represents the insulating joint of DN400 and 6.4Mpa press class.



### 技术特点:

尺寸规格: DN15~DN1200  
压力等级: PN1.0~PN40MPa  
使用寿命: 与管线同寿命, 等强度  
使用温度: -30C°~90C°  
适用介质: 油、气、水、化工原料、矿浆等

### Technical characteristics:

dimension specification: DN15~DN1200  
Pressure grade: PN1.0~PN40MPa  
Service life: same as the service life of pipeline  
Ambient temperature: -30C°~90C°  
Applicable medium: oil, gas, water, chemical feed, mineral slurry

### 质量要求:

绝缘阻值: 1000V恒表测试绝缘电阻≥10MQ, 击穿电压≥3KV。  
绝缘强度: 2500V 50Hz 1分钟无击穿或起电弧  
水压试验压力: 设计压力的1.5倍  
气密试验压力: 等同设计压力  
无损检测: 按照JB4730-94所有对接接头100%射线探伤, 其它承压焊缝100%磁粉探伤。  
坡口: 采用API5L标准

### Quality requirement:

Insulating resistance value ≥10MQ @DC1000V, Maximum voltage ≥3KV  
Insulating intensity: no breakdown or arc for one minute @2500V 50Hz  
Hydraulic pressure testing pressure: 1.5 times of designed pressure  
Air-tight testing pressure: equivalent to designed pressure  
Non-destructive testing: All the butt-connectors are 100% ray-detected according to JB4730-94; other pressure welding seams are 100% magnetic power detected.  
Groove: adopt API5L standard

### 材料特点:

本产品所采用的材料满足以下要求  
绝缘材料: 高强度环氧树脂和玻璃纤维层状复合材料; ASTM D709 G11。  
弯曲强度: 纵向≥390MPa 横向≥290MPa  
拉伸强度: 纵向≥340MPa 横向≥240MPa  
抗压强度≥340MPa 吸水率≤30mg  
浸水后电阻≥5×108Ω 击穿电阻≥35KV  
组合钢体: 16Mn JB4726; ASTM A694 F52、F60。  
短管: 20# 16Mn GB8163-99 X70 X65 X60 X56 X52 X46 API SPEC.5L。  
密封材料: O形或U形密封环; 橡胶氟、氟丁二烯橡胶, 符合ASTM D2000。  
填充材料: 冷固性树脂。  
绝缘涂料: 进口液体环氧树脂。  
防腐绝缘材料: 双组份无溶剂环氧树脂, 防腐热收缩套。

### Quality requirement:

This product adopt's material satisfy below request  
Insulating material: high strength epoxy resin and fiberglass stratification-composite material  
Bends intensity: Lengthways≥390MPa Side direction≥290MPa  
Pulls stretch intensity: Lengthways≥340MPa Side direction≥240MPa  
Compressive intensity: ≥390MPa Water-absorbings30mg  
Soaks in water behind resistance≥5×108Ω Breakdown resistance≥35KV  
Assembles steel: 16Mn JB4726, ASTM A694 F52、F60  
Short pipe: 20# 16Mn GB8163-99 X70 X65 X60 X56 X52 X46 API SPEC.5L  
Sealing material: O shape or U shape gland ring Rubber fluorine, Jing base-butadiene rubber, According ASTM D2000  
Lining material: Cold solid colophony  
Insulating paint: Imports liquid epoxy resin  
Anti-corrosion insulating material: two-component solvent-free epoxy coating. - anti-corrosion thermal contraction bushing

它的电性能指标与国外产品完全一致, 而我公司对于产品内部控制的某些指标大大高于以上数值。  
The real electrical resistance performance of the products is even better than the above statistics.

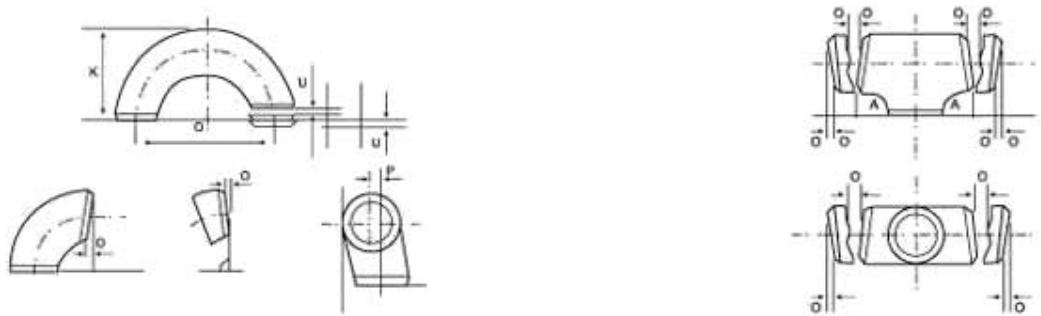


# 管件公差 TOLERANCE OF FITTINGS

## 对焊管件尺寸公差 TOLERANCE OF BUTT WELDING FITTINGS

公称直径 Nominal Diameter		坡口处外径 O.D.For Bevel End	端部内径 I.D.For End	壁厚 Wall Thickness	90°、45°弯头 Elbow		三通 Tee		异径管 Reducer	管帽 Cap	180°弯头 Elbow											
DN	NPS				A	B	C	M	H	E	O	K	不平度									
15-65	1/2-2.1/2	+1.6 -0.8	±0.8	-12.5%	±1.6	±1.6	±1.6	±1.6	±1.6	±3.2	±6.4	±6.4	±0.8									
80-100	3-4	±1.6	±1.6											±2.4	±2.4	±2.4	±2.4	±2.4	±6.4	±9.6		
125-200	5-8	+2.4 -1.6																				
250-450	10-18	+4.0 -3.2	±4.8											±4.8	±4.8	±4.8	±4.8	±9.6				
500-600	20-24	+6.4 -4.8																				±6.4
650-750	26-30		±9.6											±12.7	±12.7							
800-1200	32-48	+16 -12																				±12
1250-1500	50-60		±16											±16								
1550-1750	62-70																					
1800-2000	72-80																					

## 对焊管件形位公差 ANGULARITY TOLERANCE OF BUTT WELDING FITTINGS



公称通径 Nominal Diameter		DN	15-100	125-200	250-300	350-400	450-600	650-700	800-1050	1100-1200	1300-1500
		NPS	1/2-4	5-8	10-12	14-16	18-24	26-30	32-42	44-48	52-60
倾斜角度差 Angularity tolerance	角度偏移 Off Angle	Q	1	2	3	3	4	5	5	5	6.4
	角度平移 Off Plain	P	2	4	5	6	10	10	13	19	20

极限公差在不同标准中可能会略有差异。  
Limiting tolerances can be slightly difference between the different standards and codes.  
注：极限公差在不同标准中可能会略有差异。  
Limiting tolerances can be slightly difference between the different standards and codes.



## 管件公差 TOLERANCE OF FITTINGS

### 承插焊管件尺寸的极限公差 TOLERANCES FOR SOCKET WELDING FITTINGS

公称直径 Nominal Diameter		所有管件 All Fittings		45°、90°弯头、 三通、四通、斜三通 Elbow, Tee, Cross, Lateral	双承接管箍 Coupling	单承接管箍、异径接头 Half-coupling Reducing Inserts	活接头(承插与螺纹) Union (Socket and Thread)
		承插孔径 Socket Bore	流通孔径 Water Way Bore	中心至承插孔底 Center To Bottom of Socket	结构长度 Laying Lengths	结构长度 Laying Lengths	公称装配长度 Length Assem Nominal
DN	NPS	d1	d2	A, H	E	F	L
6~8	1/8~1/4			±0.8	±1.5	±0.8	±1.5
10~20	3/8~3/4	+0.3 0	±0.4	±1.5	±3.0	±1.5	±1.5
25~50	1~2			±2.0	±4.0	±2.0	±1.5
65~100	2.1/2~4	+0.4 0	±0.8	±2.5	±5.0	±2.5	±1.5

### 螺纹管件尺寸的极限公差 TOLERANCES FOR THREADED FITTINGS

公称直径 Nominal Diameter		45°、90°弯头、三通、四通 Elbow, Tee, Cross	双接管管箍、管帽 Coupling, Cap	单接管管箍、半管接头 Half-Coupling, Boss
		中心至端面 Center to End	端面至端面 End to End	端面至端面 End to End
DN	NPS	A	E, F	E/2
6~8	1/8~1/4	±0.7	±0.7	±0.4
10~20	3/8~3/4	±1.5	±1.5	±0.8
25~50	1~2	±2.0	±2.0	±1.0
65~100	2.1/2~4	±2.5	±2.5	±1.3

### 支管台尺寸的极限公差 TOLERANCES FOR O'LETS

支管台尺寸 Outlet Size	极限偏差 Tolerances	
	DN≤50 (2")	DN≥65 (2.1/2")
外径 O.D	±1.6	
长度 The length	±1.6	
承口内径 I.D	±0.3	±0.4
内径 I.D	±0.4	±0.6
承口深度 The depth of socket end	±0.5	
圆弧半径 Radius	±0.5	

注：极限公差在不同标准中可能会略有差异。  
Limiting tolerances can be slightly difference between the different standards and codes.



# 钢管外径与壁厚表

## OUTSIDE DIAMETER AND WALL THICKNESS

外径和壁厚表(GB/T 12459、GB/T 13401) OUTSIDE DIAMETER AND WALL THICKNESS

公称通径 Nominal Diameter	外径 Outside Diameter		公称壁厚 T Nominal Wall Thickness															
	DN	A	B	SCH5s	SCH10s	SCH20s	LG	SCH20	SCH30	STD	SCH40	SCH60	XS	SCH80	SCH100	SCH120	SCH140	SCH160
15	21.3	18	1.6	2.1	2.6	—	—	—	—	2.9	—	—	3.6	—	—	—	—	4.5
20	26.9	25	1.6	2.1	2.6	—	—	—	—	2.9	—	—	4.0	—	—	—	—	5.6
25	33.7	32	1.6	2.8	3.2	—	—	—	—	3.2	—	—	4.5	—	—	—	—	6.3
32	42.4	38	1.6	2.8	3.2	—	—	—	—	3.6	—	—	5.0	—	—	—	—	6.3
40	48.3	45	1.6	2.8	3.2	—	—	—	—	3.6	—	—	5.0	—	—	—	—	7.1
50	60.3	57	1.6	2.8	3.6	—	3.2	—	—	4.0	—	—	5.6	—	—	—	—	8.8
65	76.1(73)	76	2.0	3.0	3.6	—	4.5	—	—	5.0	—	—	7.1	—	—	—	—	10.0
80	88.9	89	2.0	3.0	4.0	—	4.5	—	—	5.6	—	—	8.0	—	—	—	—	11.0
90	101.6	—	2.0	3.0	4.0	—	4.5	—	—	5.6	—	—	8.0	—	—	—	—	12.5
100	114.3	108	2.0	3.0	4.0	—	5.0	—	—	5.9	—	—	8.8	—	11.0	—	—	14.2
125	139.7	133	2.9	3.4	5.0	—	5.0	—	—	6.3	—	—	10.0	—	12.5	—	—	16.0
150	168.3	159	2.9	3.4	5.0	—	5.6	—	—	7.1	—	—	11.0	—	14.2	—	—	17.5
200	219.1	219	2.9	4.0	6.3	—	6.3	7.1	—	8.0	10.0	—	12.5	16.0	17.5	20.0	22.2	28.0
250	273.0	273	3.6	4.0	6.3	—	6.3	8.0	—	8.8	12.5	—	16.0	17.5	22.2	25.0	28.0	32.0
300	323.9	325	4.0	4.5	6.3	—	6.3	8.8	—	10.0	14.2	—	17.5	22.2	25.0	28.0	32.0	32.0
350	355.6	377	4.0	5.0	—	8.0	8.0	10.0	10.0	11.0	16.0	13.0	20.0	25.8	28.0	32.0	36.0	40.0
400	406.4	426	4.0	5.0	—	8.0	8.0	10.0	10.0	12.5	17.5	13.0	22.2	28.0	30.0	36.0	40.0	45.0
450	457.2	478	4.0	5.0	—	8.0	8.0	11.0	10.0	14.2	20.0	13.0	25.0	30.0	36.0	40.0	45.0	50.0
500	508.0	529	5.0	5.6	—	8.0	10.0	12.5	10.0	16.0	20.0	13.0	28.0	32.0	40.0	45.0	50.0	50.0
550	559	—	5.0	5.6	—	8.0	—	—	10.0	—	—	13.0	30.0	—	—	—	—	—
600	610	630	5.6	6.3	—	8.0	—	—	10.0	17.5	—	13.0	32.0	—	—	—	—	—
650	660	—	—	—	—	8.0	—	—	10.0	—	—	13.0	—	—	—	—	—	—
700	711	720	—	—	—	8.0	—	—	10.0	—	—	13.0	—	—	—	—	—	—
750	762	—	—	—	—	8.0	—	—	10.0	—	—	13.0	—	—	—	—	—	—
800	813	820	—	—	—	8.0	—	—	10.0	—	—	13.0	—	—	—	—	—	—
850	864	—	—	—	—	8.0	—	—	10.0	—	—	13.0	—	—	—	—	—	—
900	914	920	—	—	—	8.0	—	—	10.0	—	—	13.0	—	—	—	—	—	—
950	965	—	—	—	—	8.0	—	—	10.0	—	—	13.0	—	—	—	—	—	—
1000	1016	1020	—	—	—	8.0	—	—	10.0	—	—	13.0	—	—	—	—	—	—
1050	1067	—	—	—	—	8.0	—	—	10.0	—	—	13.0	—	—	—	—	—	—
1100	1118	1120	—	—	—	8.0	—	—	10.0	—	—	13.0	—	—	—	—	—	—
1150	1168	—	—	—	—	8.0	—	—	10.0	—	—	13.0	—	—	—	—	—	—
1200	1220	1220	—	—	—	8.0	—	—	10.0	—	—	13.0	—	—	—	—	—	—

SCH5s、10s、20s用于不锈钢管件 SCH5s、10s、20s applies for stainless steel fittings.



# 钢管外径与壁厚表

## OUTSIDE DIAMETER AND WALL THICKNESS

### 外径和壁厚表(SH3408、SH3409) OUTSIDE DIAMETER AND WALL THICKNESS

公称直径 Nominal Diameter	外径 Outside Diameter	公称壁厚 T Nominal Wall Thickness														
		SCH5s	SCH10s	SCH20s	SCH40s	SCH80s	SCH20	SCH30	SCH40	SCH60	SCH80	SCH100	SCH120	SCH140	SCH160	XXS
DN	D															
10	17	1.2	1.6	2.0	2.5	3.2	---	---	2.5	---	3.5	---	---	---	---	---
15	22	1.6	2.0	2.5	3.0	4.0	---	---	3.0	---	4.0	---	---	---	5.0	7.5
20	27	1.6	2.0	2.5	3.0	4.0	---	---	3.0	---	4.0	---	---	---	5.5	8.0
25	34	1.6	2.8	3.0	3.5	4.5	---	---	3.5	---	4.5	---	---	---	6.5	9.0
32	42	1.6	2.8	3.0	3.5	5.0	---	---	3.5	---	5.0	---	---	---	6.5	10.0
40	48	1.6	2.8	3.0	4.0	5.0	---	---	4.0	---	5.0	---	---	---	7.0	10.0
50	60	1.6	2.8	3.5	4.0	5.5	3.5	---	4.0	5.0	5.5	---	7.0	---	8.5	11.0
65	76	2.0	3.0	3.5	5.0	7.0	4.5	---	5.0	6.0	7.0	---	8.0	---	9.5	14.0
80	89	2.0	3.0	4.0	5.5	7.5	4.5	---	5.5	6.5	7.5	---	9.0	---	11.0	15.0
100	114	2.0	3.0	4.0	6.0	8.5	5.0	---	6.0	7.0	8.5	---	11.0	---	14.0	17.0
125	140	2.8	3.5	5.0	6.5	9.5	5.0	---	6.5	8.0	9.5	---	13.0	---	16.0	19.0
150	168	2.8	3.5	5.0	7.0	11.0	5.5	6.5	7.0	9.5	11.0	---	14.0	---	18.0	22.0
200	219	2.8	4.0	6.5	8.0	13.0	6.5	7.0	8.0	10.0	13.0	15.0	18.0	20.0	24.0	23.0
250	273	3.5	4.0	6.5	9.5	15.0	6.5	8.0	9.5	13.0	15.0	18.0	22.0	25.0	28.0	25.0
300	325	4.0	4.5	6.5	9.5	17.0	6.5	8.5	10.0	14.0	17.0	22.0	25.0	28.0	34.0	26.0
350	356	4.0	5.0	---	---	---	8.0	9.5	11.0	15.0	19.0	24.0	28.0	32.0	36.0	---
400	406	4.5	5.0	---	---	---	8.0	9.5	13.0	17.0	22.0	26.0	32.0	36.0	40.0	---
450	457	---	---	---	---	---	8.0	11.0	14.0	19.0	24.0	30.0	35.0	40.0	45.0	---
500	508	---	---	---	---	---	9.5	13.0	15.0	20.0	26.0	32.0	38.0	45.0	50.0	---
550	559	---	---	---	---	---	9.5	13.0	17.0	22.0	28.0	35.0	42.0	48.0	54.0	---
600	610	---	---	---	---	---	9.5	14.0	18.0	25.0	32.0	38.0	45.0	52.0	60.0	---
650	660	---	---	---	---	---	---	---	---	---	---	---	---	---	---	---
700	711	---	---	---	---	---	---	---	---	---	---	---	---	---	---	---
750	762	---	---	---	---	---	---	---	---	---	---	---	---	---	---	---
800	813	---	---	---	---	---	---	---	---	---	---	---	---	---	---	---
850	864	---	---	---	---	---	---	---	---	---	---	---	---	---	---	---
900	914	---	---	---	---	---	---	---	---	---	---	---	---	---	---	---
950	965	---	---	---	---	---	---	---	---	---	---	---	---	---	---	---
1000	1016	---	---	---	---	---	---	---	---	---	---	---	---	---	---	---
1050	1067	---	---	---	---	---	---	---	---	---	---	---	---	---	---	---
1100	1118	---	---	---	---	---	---	---	---	---	---	---	---	---	---	---
1150	1168	---	---	---	---	---	---	---	---	---	---	---	---	---	---	---
1200	1220	---	---	---	---	---	---	---	---	---	---	---	---	---	---	---

• 壁厚表后带S者仅适用于奥氏体不锈钢管件。

• 此表是SH3408标准中无缝管件的公称壁厚；SH3408标准中钢板制管件的壁厚直接用毫米给出。

• Schedule with the suffix "s" only applies for Austenitic stain-less steel.

• This list applies for the nominal schedule of seamless steel fittings for SH3408 standard; the schedule of wrought steel fittings for SH3408 standard uses the millimeter system.



### 外径和壁厚表 (JIS B2311、B2312、B2313) OUTSIDE DIAMETER AND WALL THICKNESS



## 钢管外径与壁厚表

## OUTSIDE DIAMETER AND WALL THICKNESS

公称口径 Nominal Diameter		公称壁厚 T Nominal Wall Thickness																			
DN	NPS	D	SGP	SCH5s	SCH10s	SCH10	SCH20	SCH30	SCH40s	STD	SCH40	SCH60	SCH80s	XS	SCH80	SCH100	SCH120	SCH140	SCH160	XXS	
15	1/2	21.7	2.8	1.65	2.1	---	2.5	---	2.8	2.8	2.6	---	3.7	3.7	3.7	---	---	---	---	4.8	7.5
20	3/4	27.2	2.8	1.65	2.1	---	2.5	---	2.9	2.9	2.9	---	3.9	3.9	3.9	---	---	---	---	5.6	7.8
25	1	34.0	3.2	1.65	2.8	---	3.0	---	3.4	3.4	3.4	---	4.5	4.5	4.5	---	---	---	---	6.4	9.1
32	1 1/4	42.7	3.5	1.65	2.8	---	3.0	---	3.6	3.6	3.6	---	4.9	4.9	4.9	---	---	---	---	6.4	9.7
40	1 1/2	48.6	3.5	1.65	2.8	---	3.0	---	3.7	3.7	3.7	---	5.1	5.1	5.1	---	---	---	---	7.1	10.2
50	2	60.5	3.8	1.65	2.8	---	3.5	---	3.9	3.9	3.9	---	5.5	5.5	5.5	---	---	---	---	8.7	11.1
65	2 1/2	76.3	4.2	2.1	3.0	---	3.5	---	5.2	5.2	5.2	---	7.0	7.0	7.0	---	---	---	---	9.5	14.0
80	3	89.1	4.2	2.1	3.0	---	4.0	---	5.5	5.5	5.5	---	7.6	7.6	7.6	---	---	---	---	11.1	15.2
90	3 1/2	101.6	4.2	2.1	3.0	---	4.0	---	5.7	5.7	5.7	---	8.1	8.1	8.1	---	---	---	---	---	---
100	4	114.3	4.5	2.1	3.0	---	4.0	---	6.0	6.0	6.0	---	8.6	8.6	8.6	---	11.1	---	---	13.5	17.1
125	5	139.8	4.5	2.8	3.4	---	5.0	---	6.6	6.6	6.6	---	9.5	9.5	9.5	---	12.7	---	---	15.9	19.0
150	6	165.2	5.0	2.8	3.4	---	5.0	---	7.1	7.1	7.1	---	11.0	11.0	11.0	---	14.3	---	---	18.2	21.9
200	8	216.3	5.8	2.8	4.0	---	6.5	7.0	8.2	8.2	8.2	10.3	12.7	12.7	12.7	15.1	18.2	20.6	23.0	22.2	---
250	10	267.4	6.6	3.4	4.0	---	6.5	7.8	9.3	9.3	9.3	12.7	12.7	12.7	15.1	18.3	21.4	25.4	28.6	25.4	---
300	12	318.5	6.9	4.0	4.5	---	6.5	8.4	9.5	9.5	10.3	14.3	12.7	12.7	17.4	21.4	25.4	28.6	33.3	25.4	---
350	14	355.6	7.9	4.0	5.0	6.4	8.0	9.5	9.5	9.5	11.1	15.1	---	12.7	19.0	23.6	27.8	31.8	35.7	---	---
400	16	406.4	7.9	4.5	5.0	6.4	8.0	9.5	9.5	9.5	12.7	16.7	---	12.7	21.4	26.2	30.9	36.5	40.5	---	---
450	18	457.2	7.9	4.5	5.0	6.4	8.0	11.1	9.5	9.5	14.3	19.0	---	12.7	23.8	29.4	34.9	39.7	45.2	---	---
500	20	508.0	7.9	5.0	5.5	6.4	9.5	12.7	9.5	9.5	15.1	20.6	---	12.7	26.2	32.5	38.1	44.4	50.0	---	---
550	22	558.8	---	5.0	5.5	6.4	9.5	12.7	9.5	9.5	15.9	22.2	---	12.7	28.6	34.9	41.3	47.6	54.0	---	---
600	24	609.6	---	5.5	6.5	6.4	9.5	14.3	9.5	9.5	17.5	24.6	---	12.7	31.0	38.9	46.0	52.4	59.5	---	---
650	26	660.4	---	5.5	8.0	7.9	12.7	---	---	9.5	---	---	---	12.7	34.0	---	---	---	---	---	---
700	28	711.2	---	5.5	8.0	7.9	12.7	15.9	---	9.5	17.5	---	---	12.7	---	---	---	---	---	---	---
750	30	762.0	---	6.5	8.0	7.9	12.7	15.9	9.5	9.5	17.5	---	---	12.7	---	---	---	---	---	---	---
800	32	812.8	---	---	8.0	7.9	12.7	15.9	---	9.5	17.5	---	---	12.7	---	---	---	---	---	---	---
850	34	863.6	---	---	8.0	7.9	12.7	15.9	---	9.5	17.5	---	---	12.7	---	---	---	---	---	---	---
900	36	914.4	---	---	8.0	7.9	12.7	15.9	---	9.5	19.1	---	---	12.7	---	---	---	---	---	---	---
950	38	965.2	---	---	---	---	---	---	---	9.5	---	---	---	12.7	---	---	---	---	---	---	---
1000	40	1016.0	---	---	9.5	---	14.3	---	---	9.5	26.2	---	---	12.7	---	---	---	---	---	---	---
1050	42	1066.8	---	---	---	---	---	---	---	9.5	---	---	---	12.7	---	---	---	---	---	---	---
1100	44	1117.6	---	---	---	---	---	---	---	9.5	---	---	---	12.7	---	---	---	---	---	---	---
1150	46	1168.4	---	---	---	---	---	---	---	9.5	---	---	---	12.7	---	---	---	---	---	---	---
1200	48	1219.2	---	---	---	---	---	---	---	9.5	---	---	---	12.7	---	---	---	---	---	---	---

SCH5s、10s、20s用于不锈钢管件。 SCH5s、10s、20s applies for stainless steel fittings.



# 钢管外径与壁厚表

## OUTSIDE DIAMETER AND WALL THICKNESS

### 外经和壁厚表(SY/T 0510 A类)

公称直径 Nominal Diameter	外径 Outside Diameter D		壁厚等级 T Wall Thickness																									
			SCH5s		SCH10s		SCH20		SCH30		SCH40		SCH40s		SCH80		SCH80s		SCH100		SCH120		SCH140		SCH160			
			I	II	I	II	I	II	I	II	I	II	I	II	I	II	I	II	I	II	I	II	I	II	I	II	I	II
15	21.3	22	1.65	1.65	2.11	2.11	---	---	2.77	2.80	2.77	2.80	3.71	4.0	3.73	4.0	---	---	---	---	---	---	---	---	---	4.78	5.0	
20	26.9	27	1.65	1.65	2.11	2.11	---	---	2.87	3.0	2.87	3.00	3.91	4.0	3.91	4.0	---	---	---	---	---	---	---	---	---	5.56	5.5	
25	33.7	34	1.65	1.65	2.77	2.80	---	---	3.38	3.50	3.38	3.40	4.55	4.5	4.55	4.5	---	---	---	---	---	---	---	---	---	6.35	6.5	
(32)	42.4	42	1.65	1.65	2.77	2.80	---	---	3.56	3.50	3.56	3.60	4.65	5.0	4.65	5.0	---	---	---	---	---	---	---	---	---	6.35	6.5	
40	48.3	48	1.65	1.65	2.77	2.80	---	---	3.68	3.50	3.68	3.70	5.08	5.0	5.08	5.0	---	---	---	---	---	---	---	---	---	7.14	7.0	
50	60.3	60	1.65	1.65	2.77	2.80	---	---	3.91	4.0	3.91	4.0	5.54	5.5	5.54	5.5	---	---	---	---	---	---	---	---	---	8.74	8.5	
(65)	76.1	76	2.11	2.11	3.05	3.05	---	---	5.16	5	5.16	5.2	7.01	7.0	7.01	7.0	---	---	---	---	---	---	---	---	---	9.52	9.5	
80	88.9	89	2.11	2.11	3.05	3.05	---	---	5.49	5.5	5.49	5.5	7.62	7.5	7.62	7.5	---	---	---	---	---	---	---	---	---	11.1	11.0	
90	110.6	102	2.11	2.11	3.05	3.05	---	---	5.74	5.7	5.74	5.7	8.08	---	8.08	---	---	---	---	---	---	---	---	---	---	---	---	---
100	114.3	114	2.11	2.11	3.05	3.05	---	---	6.02	6.0	6.02	6.0	8.56	8.5	8.56	8.5	---	---	---	---	---	---	---	---	---	13.49	14.0	
(125)	139.7	140	2.77	2.77	3.40	3.40	---	---	6.05	6.5	6.05	6.5	9.53	9.5	9.53	9.5	---	---	---	---	---	---	---	---	---	15.88	16.0	
150	168.3	168	2.77	2.77	3.40	3.40	---	---	7.11	7	7.11	7.0	11.0	11.0	10.97	11.0	---	---	---	---	---	---	---	---	---	---	18.26	18.0
200	219.1	219	2.77	2.77	3.40	3.40	6.35	6.30	7.04	7.0	8.18	8	12.7	13.0	12.7	13.0	15.09	15.0	18.3	18.0	20.62	20.0	23.01	24.0	---	---	---	---
250	273.0	273	3.40	3.40	3.76	3.76	6.35	6.30	7.8	8.0	9.27	9.5	9.27	9.3	15.1	15.0	18.26	18.0	21.4	22.0	25.40	25.0	28.52	28.0	---	---	---	---
300	323.9	324	3.96	3.96	4.57	4.57	6.35	6.30	8.38	8.5	9.52	10	9.52	10.0	17.5	17.0	21.44	22.0	25.4	25.0	28.58	28.0	33.32	34.0	---	---	---	---
350	355.6	351	3.96	---	4.78	---	7.92	8.0	9.52	9.5	11.0	11	11.0	11.0	19.1	19.0	23.88	24.0	27.8	28.0	31.75	32.0	35.71	36.0	---	---	---	---
400	406.4	402	4.19	---	4.78	---	7.92	8.0	9.52	9.5	12.7	13	12.5	13.0	21.4	22.0	26.19	26.0	32.0	32.0	36.52	36.0	40.49	40.0	---	---	---	---
450	457.0	450	4.19	---	4.78	---	7.92	8.0	11.1	11.0	14.3	14	14.2	14.0	23.8	24.0	29.36	30.0	35.0	35.0	39.47	40.0	45.24	45.0	---	---	---	---
500	508.0	500	4.70	---	5.54	---	9.52	10.0	12.7	13.0	15.1	15	16.0	15.0	26.2	26.0	32.54	32.0	38.1	38.0	44.45	45.0	50.01	50.0	---	---	---	---
550	559	559	4.78	---	5.54	---	9.52	10.0	12.7	13.0	---	---	---	---	28.58	28.0	34.92	35.0	41.28	42.0	47.62	48.0	53.98	54.0	---	---	---	---
600	610	610	5.54	---	6.35	---	9.52	10.0	14.27	14.27	17.5	17.5	---	---	30.96	32.0	38.89	38.0	46.02	45.0	52.37	52.0	59.54	60.0	---	---	---	---

管标号数字后带S者仅适用于奥氏体不锈钢管。 Schedule with the suffix "s" only applies for Austenitic stainless steel fittings.





# 钢管外径与壁厚表

## OUTSIDE DIAMETER AND WALL THICKNESS

### 外径和壁厚表(SY/T 0510 B类) OUTSIDE DIAMETER AND WALL THICKNESS

公称通径 Nominal Diameter	外径 Outside Diameter	公称壁厚 T Nominal Wall Thickness						
		公称压力 MPa Nominal Pressure						
DN	D	1.0	1.6	2.5	4.0	6.4	10.0	16.0
15	18	3	3	3	3	3	---	---
20	25	3	3	3	3	3	---	---
25	32	3.5	3.5	3.5	3.5	3.5	4.5	6.5
32	38	3.5	3.5	3.5	3.5	3.5	4.5	7
40	45	3.5	3.5	3.5	3.5	3.5	4.5	7
50	57	3.5	3.5	3.5	3.5	3.5	5	7
65	76	4	4	4	4	4.5	6	8
80	89	4	4	4	4	5	7	9
100	108	4	4	4	4	6	8	10
125	133	4	4	4	4	7	10	12
150	159	4.5	4.5	4.5	4.5	8	12	14
200	219	6	6	6	7	10	14	18
250	273	8	8	8	8	11	16	24
300	325	8	8	8	9	12	18	28
350	377	9	9	9	9	15	22	30
400	426	9	9	9	11	16	24	34
450	478	9	9	10	12	18	26	38
500	529	9	9	11	14	20	28	40
600	630	9	9	12	15	22	---	---

本表所列壁厚均按许用应力 $[\sigma]=131\text{MPa}$ 、介质的腐蚀裕度取1.5mm算出。

The schedule indicated in above list is worked out under the condition of allowable stress  $[\sigma]$  equal to 131 MPa and the corrosion allowance equal to 1.5mm.



# 各国常用材料对照表

## THE STANDARD CONTRAST TABLE FOR MATERIAL

### 各国对焊管件、板、管材料标准对照表

The Standard Contrast Table For Butt-welding Fitting, Steel plant And Pipe material

材料 Material	美国ASTM/ASME标准 American Standard			德国DIN或欧盟EN标准 German or European Union Standard			中国GB/HG标准 Chinese Standard		日本JIS标准 Japanese Standard		
	对焊管件 Butt-welding fitting	板 Steel plate	管 Steel pipe	对焊管件 Butt-welding fitting	板 Steel plate	管 Steel pipe	板 Steel plate	管 Steel pipe	对焊管件 Butt-welding fitting	板 Steel plate	管 Steel pipe
低碳钢 Mild steel	A234WPB	A283GrC A285GrC A516-60	A53GrB A106GrB	St 37.0 St 35.8I St 35.8III	RS37-2 H II H II	St 37.0 St 35.8I St 35.8III	Q235A Q235B 20R 20g	20 20G	PG370 PT410	SS400 SM400B SB410	STPG370 STPT410
1Cr-1/2Mo	A234WP12	A387Gr12	A335P12	13CrMo44 1.7335	DIN 17155 13CrMo44	DIN 17175 13CrMo44	GB6654 15CrMoR	GB5310 15CrMo	PA22	SCMV2	STPA22
11/4Cr-1/2Mo-Si	A234WP11	A387Gr11	A335P11	—	—	—	GB150 14Cr1MoR	—	PA23	SCMV3	STPA23
21/4Cr-1Mo	A234WP22	A387Gr22	A335P22	10CrMo910 1.7380	DIN17155 10CrMo910	DIN17175 10CrMo910	—	GB5310 12Cr2MoG	PA24	SCMV4	STPA24
5Cr-1/2Mo	A234WP5	A387Gr5	A335P5	—	—	—	—	GB6487 1Cr5Mo	PA25	SCMV6	STPA25
-46°C C-Mn钢	A420WPL6	A516Gr60 A516Gr70	A333Gr6	TSTE285 (1.0488) TSTE355 (1.0568)	DIN17102 TSTE285 TSTE355	DIN17179 TSTE285 TSTE355	GB3531 16MnDR (-40°C)	GB150 09MnD	PL380	SLA325A	STPL380
-101°C 3.5Ni钢	A420WPL3	A203GrD	A333Gr3	10Ni14 (1.5637)	DIN17280 10Ni14	DIN17173 10Ni14	—	—	PL450	SL3N255	STPL450
18-8不锈钢 Stainless steel 18-8L超低碳	A403WP304 A403WP304L	A240-304 A240-304L	A312TP304 A312TP304L	X5CrNi1810 (1.4301) X2CrNi1911 (1.4306)	DIN17440 1.4301 1.4306	DIN17458 (无缝Seamless) DIN17457 (焊管Weld) 1.4301 1.4306	GB4237 304 304L	GB14976 (无缝Seamless) HG20537 (焊管Weld) 304 304L	SUS304 SUS304L	JISG4304 SUS304 SUS304L	JISG3459 SUS304TP SUS304LTP
18-12Mo不锈钢 Stainless steel 18-12MoL超低碳	A403WP316 A430WP316L	A240-316 A240-316L	A312TP316 A312TP316L	X5CrNiMo 17122(1.4401) X2CrNiMo 17132(1.4404) X8CrNiMoTi 1.4571	DIN17440 1.4401 1.4404 1.4571	DIN17458 (无缝Seamless) DIN17457 (焊管Weld) 1.4401 1.4404 1.4571	GB4237 316 316L 316Ti	GB14976 (无缝Seamless) HG20537 (焊管Weld) 316 316L 316Ti	SUS316 SUS316L	SUS316 SUS316L	SUS316TP SUS316LTP
双相钢 Duplex Stainless steel	A815 S31803 (2205)	A240 S31803 (2205)	A790 S31803 (2205)	VdTDv418 X2CrNiMoN 225(1.4462)			—	—	SUS329 J1	SUS329 J1	SUS329 J1TP
904L	(B366) (N08904)	B625 N08904	B677(S) B673(W) N08904	VdTDv421 X2NiCrMoCu 25.205(1.4539)			—	—	—	SUS317 J5L	—
Monel 400	B366 N04400	B127 N04400	B165 N04400	同右	DIN17750 NiCu30Fe (2.4360)	DIN17751 NiCu30Fe (2.4360)	JB4741 NCu30	JB4742 NCu30	—	JISH4551 NCuP	JISH4552 NCuT
Incoloy800HT 800	B366 N08811 N08800	B409 N08811 N08800	B407 N08811 N08800	同右	EN10028-7 1.4959 1.4876	DIN17459 1.4958 1.4876	—	—	—	—	—
Inconel1825	B366 N06825	B424 N06825	B423 N06825	同右	DIN17750 2.4858	DIN17751 2.4858	—	—	—	—	—
C-276	B366 N10276	B575 N10276	B622 N10276	同右	DIN17750 2.4819	DIN17751 2.4819	—	—	—	—	—



# 各国常用材料对照表

## THE STANDARD CONTRAST TABLE FOR MATERIAL

### 各国锻制管件、法兰、棒材料标准对照表

The Standard Contrast Table For Forged Fitting, Flange And Bar material

材料 Material	美国ASTM/ASME标准 American Standard		德国DIN或欧洲EN标准 German or European		中国GB/HG标准 Chinese Standard		日本JIS标准 Japanese Standard	
	锻制管件、法兰 Forging fitting flange	棒 Bar	锻件 Forging	棒 Bar	锻件 Forging	棒 Bar	锻件 Forging	棒 Bar
低碳钢 Mild steel	A105 (A181)	A675-70 A36	EN10025/S235JRG2 (RS137-2) (1.0038) DIN17243/C22.8		JB4726 20/16Mn	GB699/20 GB1591/Q345B	JISG3202 SFVC2A JISG4051 S25C	JIS G3101 SS400 JIS G3103 SM400B
1Cr-1/2Mo	A182F12	A739B12	DIN17243 13CrMo44 (1.7335)		JB4726 15CrMo	---	JIS G3203 SFVA F12	---
1¼Cr-1/2Mo-Si	A182F11	A739B11	---		JB4726 14Cr1Mo	---	SFVA F11A	---
2¼Cr-1Mo	A182F22	A739B22	DIN17243 10CrMo910 (1.7380)		JB4726 12Cr2Mo1	---	SFVA F22B	---
5Cr-1/2Mo	A182F5	---	DIN2528 12CrMo195 (1.7362)		---	---	SFVA F5B	---
-46°C C-Mn钢	A350LF2	---	DIN17103 TSTE355 (1.0566)	DIN17102 TSTE355 (1.0566)	JB4727 16MnD	---	JIS G3205 SFL2	---
-101°C 3.5Ni钢	A350LF3	---	DIN17280 10Ni14(1.5637)		---	---	JIS G3205 SFL3	---
18-8不锈钢 Stainless steel 18-8L超低碳	A182F304 A182F304L	A479-304 A479-304L	DIN17440 1.4301 1.4304		JB4728 304 304L	GB1220 304 304L	JIS G3214 F304 F304L	JIS G4303 SUS304 SUS304L
18-12Mo不锈钢 Stainless steel 18-12MoL超低碳	A182F316 A182F316L	A479-316 A479-316L	DIN17440 1.4401 1.4571 316Ti		316 316L 316Ti	GB1220 316 316L 316Ti	JIS G3214 F316 F316L	JIS G4303 SUS316 SUS316L
18-8Ti	A182F321	A479-321	DIN17440 1.4541		JB4728 0Cr18Ni10Ti	GB1220 0Cr18Ni10Ti	JIS G3214 F321	JIS G4303 SUS321
双相钢 Duplex Stainless steel	A182F51	---	VdTov418 X2CrNiMoN225 (1.4462)		---	---	---	SUS329J1
904L	B N08904	B649 N08904	VdTov421 X2NiCrMoCu25205 (1.4539)		---	---	---	SUS317J5L
Monel 400	B564 N04400	B164 N04400	DIN17743 NiCu30Fe (2.4360)		JB472/NCu30	---	---	---
Incolloy800HT 800	B564 N08811 N08800	B408 N08811 N08800	DIN17460 1.4959 1.4876	---	---	---	---	---
Inconel1825	(B564) N08825	B425 N08825	DIN17754 2.4858	DIN17752 2.4858	---	---	---	---
C-276	B564 N10276	B574 N10276	DIN17754 2.4819		---	---	---	---

## 上海常浩高压管件有限公司

SHANGHAI CHANGHAO HIGH PRESSURE PIPEFITTINGS CO.,LTD.

销售地址：普陀区桃浦路321号 邮编：200333

工厂地址：浦东新区华夏东路3766号

电话：021-52851387 28600140 28211639

传真：021-33539683 51685120

网站：[www.changhaopipe.com](http://www.changhaopipe.com)

All specification information is subject to change without notification.

所有产品信息如有更改恕不另行通知。本公司保留对所述产品规格进行修改补充的权利。